



warp and weft

Vol. XV, No. 6

June, 1962

warp and weft

Published monthly (except July and August)
by Robin & Russ Handweavers, 632 Santa
Barbara St., Santa Barbara, Calif.

Subscription: \$4.00 per year.

Back Issues: 40c each, plus 3c postage.

Editor: Russell E. Groff, 632 Santa Barbara St.,
Santa Barbara, California.

Assistant Editor: Robin Groff.

Vol. XV, No. 6

June, 1962

A Word from the Editor

We have good news about our shop and move to Oregon. We were able to purchase the little piece of state property we wanted, and so we will have frontage on the main highway in our new shop.

THIS WILL BE THE LAST ISSUE OF WARP AND WEFT TO COME FROM SANTA BARBARA. And we have our new address in Oregon to give you.

ROBIN & RUSS HANDWEAVERS
P.O. Box 273 or
533 North Adams Street
McMinnville, Oregon

Many of the readers, particularly those in the east, have inquired where McMinnville, Oregon is. It is situated 40 miles south and slightly west of Portland, Oregon. It is on Highway 99W, which I believe is the old highway. Many persons from Portland going to the coast will go within about 2 miles of McMinnville.

Also, our shop is under construction, and is supposed to be ready for occupancy as of August 1, 1962. We hope to take about a month getting all the looms set-up, shelves built and yarns put away, and hope to have

a grand opening the whole month of September. We just had word today from the architects that the foundation is in and the walls are starting up, and are we ever excited about the new building.

Also, we should tell you that we have a new home under construction in McMinnville and Robin will leave here about June 15th, after school is out, to make the final decisions as to paint colors, trim, and all of the house finish inside. It is to be an all brick house, and will be finished we are told about July 15th. So with all this, you can see how we are now counting the days until we move.

I will stay in Santa Barbara getting our furniture and all of our yarns and supplies packed, so that we can send these to our new shop in Oregon.

Also, since the last issue of Warp and Weft, I attended the 10th Annual Conference of Northern California Handweavers, and I must say a few words about it.

This was a very spectacular weaving exhibition, and it is just too bad that not all of the weavers we know of could not attend it. The use of colors to me, was the outstanding thing of the whole exhibition. They were just "scrumptuous" to say the least. The theme of the conference was "El Dorado Days," and many of the guilds interpreted this to mean the richness in nature's minerals.

The guilds tried to show how rich these minerals are in color, and then have richness in color of fabrics to go with that of nature. I felt that all of these guild exhibitions were outstanding, and I must tell you that if you do ever have a chance to go to a weaving conference (no matter where it is), you will probably leave it greatly inspired to do more and better weaving. I'm sure that this is how most of the weavers felt after seeing the exhibitions in this 10th annual conference of Northern California Handweavers.

We also hope to have a last minute cash sale the first two weeks in July, from July 2nd to the 14th, that we might dispose of as

many items as possible, to they will not have to be packed and moved.

Meanwhile, we still continue to work on different weaving projects here in the shop. We have an 8 harness summer and winter Christmas Card project in progress for our multiple harness bulletin, Drafts and Designs, and we have a new sample for Warp and Weft that we expect to put on the loom tomorrow.

Well, it is time to get back to the other details that have to be taken care of for this issue of Warp and Weft, that we might get it out on schedule.

RUSSELL E. GROFF, *Editor*

This Month's Cover

The cover this month is another of the fine tapestries that were displayed at our weaving conference here in Santa Barbara in March. This one was woven by one of the members of the South Coast Weavers Guild. This guild is located just north of San Diego in the Laguna Beach area and also inland from there. Their exhibition at the conference consisted of what I considered to be 5 of the most outstanding pieces of tapestry that I have ever seen, and of course, we will share the others with you in future issues. I also hope that the South Coast Weavers Guild will also send us the names of the weavers of the different tapestries that they had in their exhibition that we might share them with you.

This Month's Book Review

This month a page of the past is reviewed with a resume of this book. It is entitled NON-EUROPEAN LOOMS, by R. A. Innes.

Actually the book is a listing and description of all of the different kinds of non-european looms to be found in the collections of the Bankfield Museum of Halifax, Nova Scotia, Canada.

This is a well illustrated book showing or describing about 18 different kinds of

looms from Africa, the Cameroons, Egypt, and Madagascar.

There are also descriptions of about 5 different looms from India, 5 Asians looms from China, Burma or other parts of Asia and one loom from the Santa Cruz islands of the Pacific Ocean.

This book has been published so that the student of weaving, who is unable to examine such looms personally, is able to become acquainted with them by this means. I believe the book has been sponsored and paid for by the Halifax Museums.

This is a soft cover book, and the price is \$3.25 plus postage.

Title: NON-EUROPEAN LOOMS.

Author: R. A. Innes.

Publisher: Halifax Museums.

Price: \$3.25 plus 14c postage.

AVAILABLE: Robin & Russ Handweavers.

New Sample Loom Now Available

Nilus Leclerc, Inc of Canada is now making a new model sample loom that is available. It is 10" wide, has regular 9" wire heddles, and the reed is 4 1/4" high. It is being made in 4, 8, 12, and 16 harness models. If any of you would like further information about these as to size, cost, etc., write to Robin & Russ Handweavers, and we shall be glad to help you. This would be excellent for the 4 harness and multiple harness weaver to make samples on.

**2 NEW HEAVY RAW SILKS
4 PLY FOR WARP OR WEFT
1,200 and 2,100 Yards Per Lb.**

\$4.00 Per Lb.

Free Samples on Request

**ROBIN & RUSS
632 Santa Barbara St.
Santa Barbara, California**

TWILL AND M's & O's FOR TABLE LINENS

This is an all linen fabric which would be excellent for table linens, place-mats, and it would also make excellent drapery with perhaps a cotton warp and a linen weft.

THREADING DRAFT:

4	x x x	x x x x x x		x x x x x
3		x x x x x	x x x x	x x x x x
2	x x x x	x x x x x		x x x x x
1		x x x x x	x x x	x x x x x
	7	20	7	20(A)

WARP:

The warp is 40/2 Pink Linen from Lily Mills Company. It has 6,000 yards per lb.

WEFT:

The weft is 20/1 linen with 6,000 yards per lb. It also is from Lily Mills Company.

REED USED:

A 12 dent reed was used, and it was triple sleyed. That is, 3 ends per dent or 36 threads per inch.

TREADLING SEQUENCE:

This treadling sequence can be made a little easier by changing it to a slightly different tie-up than the standard tie-up, but I will give it to you first here as it would be on the standard tie-up.

Treadle: 5,6,5,6,5,6 (6 threads).

Treadle: 3,2,1,4 (5 times or 20 threads).

Treadle: 5,6,5,6,5,6 (5 times or 20 thds.)

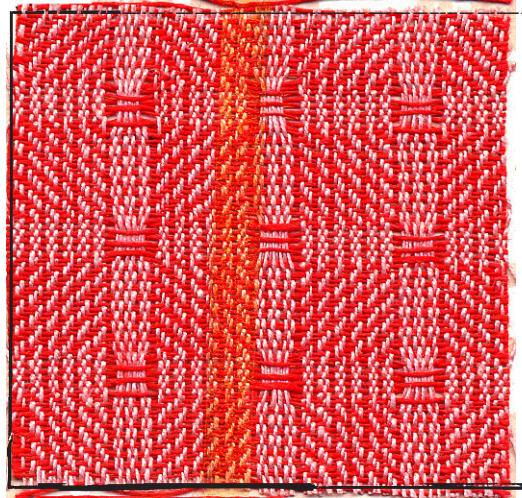
End of pattern, repeat over and over.

TIE-UP DRAFT:

4	O	O	X	X	X	O
3	O	X	X	O	O	X
2	X	X	O	O	X	O
1	X	O	O	X	O	X
	1	2	3	4	5	6
					A	B

X's above—tie-up for Counter-balanced
O's above—tie-up for Jack-type

SAMPLE:



ALTERNATE TIE-UP DRAFT:

We are giving the alternate tie-up and will give the alternate treadling, which will make the weaving much faster and easier, as it is a more logical treadling.

4	X	O	O	X	O	X
3	O	O	X	X	X	O
2	O	X	X	O	O	X
1	X	X	O	O	X	O
	1	2	3	4	5	6
					A	B

X's above—counter-balanced tie-up.
O's above—jack-type tie-up.

ALTERNATE TREADLING:

Here is the alternate treadling, which is the much faster and easier treadling.

Treadle: 6,5,6,5,6,5 (6 threads).

Treadle: 4,3,2,1 (5 times or 20 thds.)

Treadle: 6,5,6,5,6,5 (6 threads).

Treadle: 4,3,2,1 (5 times or 20 thds.)

52 threads in one pattern, repeat.

Repeat over and over.

Cost of Our Weaving Project

First of all, the 40/2 colored linen warp costs \$6.40 per lb. This set-up was 40" wide, and we had a 9 yard warp, so it took 2 lbs. and 7 oz. of the 40/2 linen for our 9 yard warp. Breaking it down, it came to \$15.60, or actually, \$1.75 per yard.

FROM THIS 9 YARD WARP, WE WERE ABLE TO OBTAIN 7-2/3 yards of finished material. For the 7-2/3 yards of weft, it took 1 lb. 14 oz. of the 20/1 linen, so the weft came to a total cost of \$8.90 (it is \$4.75 per lb.), or breaking it down to cost per yard, it comes to \$1.15 per yard.

WARP COST PER YARD\$1.75

WEFT COST PER YARD\$1.15

FABRIC COST PER YARD\$2.90

Plan For a Place-Mat Project

At 36 threads per inch, use a total of 506 warp ends. This will be 2 threads or warp ends over a 14" width set-up. You will repeat the complete threading draft as given 9 times, and then you will add the unit of the threading draft marked A (20 threads) to balance the pattern so that it is the same on both salvage edges.

9 repeats of pattern, 486 threads.

A unit to balance — 20 threads.

Total warp ends in mat, 506 threads.

NOTE: The threads used in this project are available either from Lily Mills Company, from Robin & Russ Handweavers, or from any distributors for Lily Mills Weaving Threads.

More About this Fabric

First of all, you want to use a tight or firm beat, and for linens, I myself prefer to use a double beat. Particularly, you want a firm beat on mats if you use this project for that purpose. Of course, you will always find that your 14" width projects will always beat tighter than your 40" width projects.

We have two M & O units in the threading draft, which actually create a sort of warp stripe and give you the lacy effect in the weaving. On certain treadles, these 7 threads pull together as one thread, and consequently if you have a long warp, they will gradually loosen up, and will not maintain as tight a tension as those threads in the twill portion of the pattern. This is where a lease stick comes in handy, as you can put one or two of these under the loose threads, tie the stick or sticks to the back beam and have the loose threads go up over the lease sticks, and the rest of the warp go under them, and this will help keep your tension even. Of course, if you have an extremely long warp, such as in drapes, it will pay you to cut off some of your finished material after 7 or 8 yards, tie-up and start weaving again. This will help maintain an even tension.

Also notice that with our bright red weft thread, that the color of the warp, a very nice pink, is almost changed to natural. I thought after the fabric was woven, that it would have been more striking, if the pink had been more intense, or if perhaps we had used other colors.

Both the 40/2 linen warp, and the 20/1 linen weft are available in about 25 different colors.

Also, I prefer on something like this to use a 20/1 weft thread with a 2 ply warp thread as it results in a much softer fabric after several washings. Normally if you use the 40/2 for both warp and weft, you will

notice that the linen still stays stiff after repeated washings, but if you use the 20/1 for weft, you have a fabric that is much softer to the touch after several washings. It is true though, that probably your fabric will last much longer if you use the 2 ply thread for both warp and weft. So, it is up to the individual weaver to determine whether he wants a fabric soft to the touch or a longer wearing fabric.

A Second Book Review

This is another of the many fascinating books about the tartans, and is titled "TARTANS, PLEASURES AND TREASURES."

This really is not a book for the weaver even though there are many tartans illustrated.

This well illustrated book is a factual, illustrated history of the wearing of tartans from as far back as 1093.

This book however, is much more interesting and easier to read than most histories of such a subject, and it has a most personal touch in the illustrations of the clothes of the times, how to dress in them, how to wear them, and their use by men, women and children.

This is the first of the books that I have seen which illustrates and tells about the wearing of tartan tight-fitting pants by the men. These are called "Trews," and these are told about several times, and are also illustrated several times.

There are about 40 tartans illustrated in color as well as many other illustrations in color of the tartan clothing being worn by various people throughout a period of two hundred to three hundred years. Many of these illustrations in color and black and white are copies of paintings and drawings which help make this history so interesting and factual.

The author of this book is Christian Hesketh, and it is a hard-cover book printed in Italy for a company in New York.

TITLE: TARTANS, Treasures & Pleasures.

AUTHOR: Christian Hesketh.

PRICE: \$4.25 plus 19c postage.

AVAILABLE: Robin & Russ.

CLASSIFIED ADVERTISING

A classified advertising section will be tried out in *Warp and Weft* for a few months, to see if there is any interest or response. Why not advertise your old loom, duplicate equipment, and other such items in this section. Price per 5-line ad is \$4.00. Payment to accompany your advertising copy.

A NEW BROCHURE AN BAG HANDLES, frames and forms is available from Robin & Russ. It has our new Oregon address on it, but any of you interested in a photograph of the new bag handles and frames available write to: Robin & Russ, 632 Santa Barbara St., Santa Barbara, California.

EXTRA FINE, 100/2 LINEN, for both warp and weft is now available. It is an imported thread, on approx. 1 lb. tubes. It has 15,000 yards per lb. Price is \$12.75 per lb. Robin & Russ, 632 Santa Barbara St., Santa Barbara, Calif.

EXTRA, EXTRA FINE 110/2 LINEN, for both Warp and Weft is now available. It is available on approximately 1 lb. tubes and is imported thread, having 16,500 yards per lb. Price is \$13.50 per lb. Robin & Russ, 632 Santa Barbara St., Santa Barbara, California.

THE HANDWEAVERS WORKBASKET now stocks a complete and full range of Bernat colors in both the Fabri and Afghan yarns. Sample color cards, thirty cents, upon receipt of request. Grace D. Blum, THE HANDWEAVERS WORKBASKET, Box 691, R. R. 1, West Chicago, Illinois.

SILK BOUCLE WITH A WOOL CORE: This is available in natural, California Gold, light aqua, and Deep Turquoise. It has approximately 2,000 yards per lb., and is on cones of 1 lb., 2 oz. each. Natural is \$4.00 per lb., and colors are \$6.00 per lb. 4 oz. spools may also be had at \$1.25 for the natural and \$1.75 for the colors. Robin & Russ, 632 Santa Barbara St., Santa Barbara, California.

FUSED GOLD AND SILVER: This is a heavy supported metallic wrapped around a heavy cotton. When woven, it appears as a glint rather than a stripe. Available on 500 yard spools, in silver or gold, it is \$1.00 per spool. Robin & Russ, 632 Santa Barbara St., Santa Barbara, California.

BLEACHED WHITE LARGE LOOP MOHAIR: A beautiful yarn for either knitting or weaving. 750 yards per lb. on cones of slightly over 1 lb. Price is \$3.50 per lb. Robin & Russ, 632 Santa Barbara St., Santa Barbara, Calif.

THE CRACKLE WEAVE: An interesting new book with 42 projects in Crackle Weave. Complete threading, tie-up and treadling given. Price is \$3.50 plus 9c postage. Robin & Russ, 632 Santa Barbara St., Santa Barbara, California.

RAMIE DAMASK TABLE CLOTHS. We have imported these from Switzerland and they are beautiful. Here are the sizes and prices.

54"x72"—Rose Design	\$12.50
54"x82"—Rose Design	\$15.00
54"x72"—Star Design	\$12.50
54"x82"—Star Design	\$15.00
54"x72"—Block Design	\$12.50
54"x96"—Block Design	\$17.50

These are exceptionally nice table cloths, just as nice or nicer than linen ones, and they will outwear linen. Robin & Russ, 632 Santa Barbara St., Santa Barbara, Calif.

LACE AND LACEY WEAVES: An interesting book with 47 projects in lace weaves in 4, 6 and 8 harness weaves. Price is \$3.50 plus 9c postage. Robin & Russ, 632 Santa Barbara St., Santa Barbara, California.

THE HANDLOOM WEAVES: An analysis and classification of 52 most important Harness Controlled Weaves with illustrations, Drafts, Tie-ups, Treading Orders, Selvage Threadlings and Explanations. A must for the serious weaver. Price \$3.00 plus 9c postage. Robin & Russ, 632 Santa Barbara St., Santa Barbara, Calif.

FRAME N ALL. A nice handle with the complete pattern for making the bag up and with sewing directions. It is a facile spring frame. Price is \$1.50. Postage extra. Robin & Russ, 632 Santa Barbara St., Santa Barbara, Calif.

TAPESTRY BOBBINS IN STOCK: These are imported from Sweden and are nicely made. Price is 20c each. Robin & Russ, 632 Santa Barbara St., Santa Barbara, Calif.

BOBBIN LACE BOBBINS: These are also imported bobbins, and are extremely well made of hard wood. Price is 20c each. Robin & Russ, 632 Santa Barbara St., Santa Barbara, Calif.

8/5 NATURAL LINEN WARP FOR RUGS. For use in the Rya, Flossa, and other type rugs. It is available on approximately 1/2 lb. spools, 250 yards per spool. Robin & Russ, 632 Santa Barbara St., Santa Barbara, Calif.

MINIATURE SHUTTLE LAPEL PINS: These are beautifully made of Italian Pear of Ebony. They actually have a miniature bobbin in them with thread on the bobbin. Price is \$2.00 each, postage prepaid. A wonderful gift for your weaving acquaintances and friends. Robin & Russ, 632 Santa Barbara St., Santa Barbara, Calif.

ADD A WARP CLIP SPOOLS: For that missing thread in your warp, or to add a different texture or color use these clip spools, which will clamp on your back beam. Price is \$1.50 each. Robin & Russ, 632 Santa Barbara St., Santa Barbara, Calif.

PLASTIC OR METAL S TYPE REED HOOKS, imported from Sweden. Price is 60c each. Robin & Russ, 632 Santa Barbara St., Santa Barbara, Calif.

6/3 RAYON FLOSS IN COLORS: We are trying to clear this out. We have about 10 to 12 colors left, approx. 4 oz. per spool. It is normally \$1.25 per spool, but is on sale while it lasts at 75c per spool. Excellent for accents, trim, borders, etc. Try an assortment of 5 or 6 colors for your designs or borders. Robin & Russ, 632 Santa Barbara St., Santa Barbara, California.

WOOD KNITTING BAG HANDLES, 12" width, varnished and very nicely finished. Price is \$1.25 per pair. Robin & Russ, 632 Santa Barbara St., Santa Barbara, Calif.

OLD HAMPSHIRE YARNS

for

Hand Weaving - Hand Knitting
Rug Hooking

Special prices on 20 lbs. and over quoted on request. Send 10c for a sample folder. Special attention is given to institutions and schools for arts, crafts and therapy programs.

THOMAS HODGSON & SONS, INC.
Department Y
Concord, New Hampshire

AVAILABLE ONCE AGAIN WEAVING PATTERNS FROM SWEDEN by Malin Selander

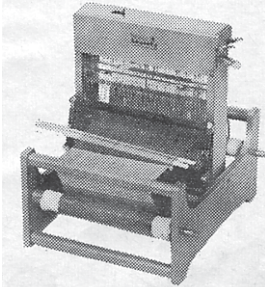
This is her first book, just reprinted in 1961, and has been out of print for about two years. Same price as before, \$6.95 plus 19c p.p. charges. Can be shipped immediately.

Also Available is the 2nd Book,
SWEDISH HANDWEAVING
by Malin Selander
\$6.95 plus 19c p.p.

ROBIN & RUSS HANDWEAVERS

Latest LECLERC Loom

A small 10", 4 harness loom, well made, 15 lbs. weight. Excellent for samples. Less than \$35.00. It is also available in 8, 12, and 16 harness models.



For further information write to:

NILUS LECLERC, Inc., W.W. L'Isletville
Quebec, Canada

The Weaver's Marketplace

NEW!!!

Functional Overshot by Grace D. Blum

A basic source for modern designs. Contains concise directions for weaving almost any overshot threading, in 24 different methods and 32 woven swatches.

\$16.50 per copy

Mailed prepaid when check accompanies order.

HAND WEAVERS' WORK BASKET
Box 691, R.R. 1 West Chicago, Illinois

HANDWEAVING YARNS and SUPPLIES

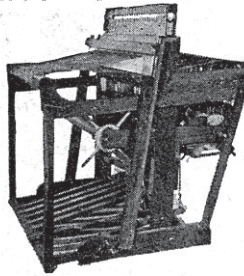
A wide variety of distinctive yarns, developed especially for handweaving is available for prompt shipment in quantities to suit your needs.

WRITE TODAY FOR FREE CATALOGUE
AND FREE PRICE LIST.

The Handweaver's Headquarters
LILY MILLS COMPANY
Dept. HWWW Shelby, N. C.

THE BABY NORWOOD LOOM

1. 16" Weaving Width.
2. Custom built, of Cherry.
3. Folding Model.
4. Can fit in the back of any 4 door car.
5. Size open is 23" wide by 30" deep. Folded it is 23"x24".



THE NORWOOD LOOM CO.
P.O. Box 272, Baldwin, Michigan

A Complete Line
YARNS LOOMS
AND WEAVING SUPPLIES

GOLDEN RULE PRODUCTS

Write for a catalogue and list of agents

HUGHES FAWCETT, INC.
P. O. Box 276 Dunellen, New Jersey

warp and weft

632 Santa Barbara Street
Santa Barbara, California

BULK RATE
U.S. POSTAGE
PAID
Permit No. 440
Santa Barbara, Calif.