



warp and weft

Vol. XV, No. 7 September, 1962

warp and weft

Published monthly (except July and August) by Robin & Russ Handweavers, 533 North Adams Street, McMinnville, Oregon.

Subscription: \$4.00 per year.

Back Issues: 40c each, plus 3c postage.

Editor: Russell E. Groff,

Assistant Editor: Robin Groff.

Vol. XV, No. 7

September, 1962

A Long Word from the Editor

We have moved into our new shop in McMinnville, Oregon, and we want to once again emphasize our change of address. Here is our new address:

WARP AND WEFT
P. O. Box 273 or
533 North Adams Street
McMinnville, Oregon

We also want to share with you our pleasure in our new weaving shop. It is a wonderfully designed building, and is about 1/5 bigger than the shop that we had in Santa Barbara. We will share with you our pleasure in it in a later issue by putting in a photograph of our new shop. We certainly do feel that it was worthwhile to go to an architect and have him draw our building plans, as it resulted in such a distinctive building for us.

After we get all unpacked and settled, we will have quite a bit of room for display purposes. We also hope that eventually, we will be able to have summer workshops at our new shop, and we have lots of room for this. You can't imagine how happy we are over this move.

And you should see our new home. It is wonderful, with some 1800 feet of floor space and particularly a wonderful

family room, lots of large windows and sliding doors, and so many other things to mention. We will now have to start working on drapes for our new shop and home and will plan on sharing these weaving adventures with you also.

We find that in Oregon you get about 50% more for your money in new buildings than you do in Southern California and that is one reason why we are so pleased with this change of ours.

And McMinnville is a wonderful town to live in. The people are so friendly and nice that you can't believe it. It is a very convenient location also, being just about 38 miles from Portland, about 24 miles from Salem, about 45 miles from the Oregon Coast, and about 90 miles from Mount Hood. So you can see why we are enjoying this change of climate. And you should see the wonderful fruit that grows in this area. On the land where our shop, is, we have a good cooking apple tree, pie-cherry tree, a large "Bing" cherry tree, several large walnut trees and we hope to plant more. Just yesterday I was up in the neighbor's Queen Anne cherry tree and eating some of those delicious cherries. We took a bicycle ride on Sunday afternoon, and on the way, we picked large black raspberries, and some good eating apples from trees and bushes right alongside the road.

Well, I must not get too enthusiastic or all of the people from Southern California will move up this way.

Next week, we start to set-up the 6 different looms that we have in the shop. We will have on display in our shop the Leclerc, Norwood, Macomber Add-a-harness, and Gilmore floor looms. We will have a complete stock of the Structo looms in the 8", 20" and 26" widths, as well as the Missouri table loom, and several other small table looms.

We have now on order a new stock of

some 600 lbs. of different kinds of silks and novelty threads, and we will tell you more about these in the future, and perhaps use some of them in our samples.

At present, we have boxes sitting everywhere in the shop, and most of the yarns and accessories to put away, but this will all be eventually accomplished. And last, but not least, we have to mount our 2 winding machines, and then we will be all set-up.

We hope to have a grand opening the whole month of September, and if you have a chance to visit us then or any time in the future, we hope you will stop by and share our pleasure in our new home.

RUSSELL E. GROFF, *Editor*

This Month's Cover

The cover this month almost speaks for itself. It was a wonderful exhibit at the weaving conference in Santa Barbara. It was put up by the South Coast Weavers Guild, a weaving guild which is located near Laguna Beach. It consists of members located in Orange County and also other weavers in the area from San Diego north to about Long Beach, California. I thought that the tapestries they exhibited were one of the most outstanding groups of tapestries I have ever seen exhibited. Also, I felt that the yardages they used in the background were an outstanding display of yardages, and it was worth attending the conference to see this one guild's display.

A New Line of Labels

The J & J Cash Company has come out with an interesting new line of labels. They are a combination of woven and printed labels, and are very reasonable in price. You can have labels with these following words woven on the label, and your name printed on the lower portion of the label.

Hand Woven by — Styled by
Hand Made by — An Original by
Custom Made by — Tailored by
Hand Knit by — Hand Fashioned by
Also, these labels are distinctive in that they have been dressed up a bit and are not just plain lettering. Those for the weaver have a shuttle on them, and those for the knitter have a ball of yarn and knitting needles, etc.

Delivery on these is quite fast also, taking about 2 to 3 weeks at the most, and in many cases, delivery is much faster than even two weeks. The prices are extremely reasonable, and I will give them here for your reference.

3 dozen labels are \$2.00

4 dozen labels are \$2.50

5 dozen labels are \$3.00

These labels may be ordered from any store handling Cash's labels, or they may be ordered from us if desired.

10 Copies Still Available

There are still available about 10 copies of the out of print book, **HOW TO WEAVE LINENS** by Edward F. Worst. This is an excellent book giving many 4 and 8 harness patterns and also giving the complete details of how linen is raised, and the complete processes involved in obtaining the linen thread from the flax plants. The regular price of \$5.50 per copy still applies although usually when a book is out of print it goes up in price. Postage prepaid if check accompanies order on these books only. I myself think that this is one of the better books available for the multiple harness weaver, as there are 5, 6 and 8 harness patterns featured, as well as many 4 harness patterns. Available from Robin & Russ.

STAGGER

This is an interesting 4 harness miniature overshot pattern, which we believe was developed by Bertha Grey Hayes sometime in late 1930 or early 1940. It would make nice drapery material, material for decorative use such as handbags, pillows, etc.

Threading Draft

4	X	X	X	X	X		
3	X			X	X	X	X
2					X	X	X
1		X	X			X	X

Warp

The warp thread used is size 20/2 Egyptian Cotton (8400 yards per lb.) and the color is Spring Green.

Weft

Two threads are used in the weft. The pattern thread is a 2/18's Worsted, Bernat's Fabri in color No. 2775, Silver Pine. Fabri has 4800 yards per lb., and it comes in 2 oz. skeins. It is \$6.80 per lb., or if less than 1 lb. of a color is purchased, it is \$1.00 per 2 oz. skein.

The tabby thread was another Egyptian cotton thread with 8400 yards per lb. It is in a light yellow color, called Popcorn. There are now 100 colors available in the egyptian cotton, and it comes in size 20/2 and has 8400 yards per lb. The price is \$5.00 per lb., or \$2.50 per 1/2 lb. spool.

Reed Used

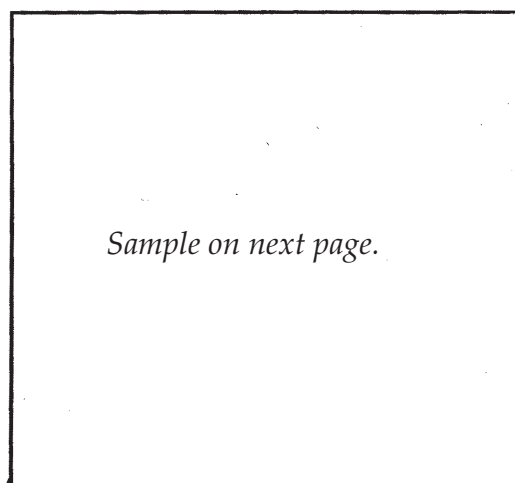
A 15 dent reed was used, and it was double-sleyed, 2 ends per dent, or 30 threads per inch.

Tie-Up Draft

4	O	O	X	X	X	O
3	O	X	X	O	O	X
2	X	X	O	O	X	O
1	X	O	O	X	O	X
	1	2	3	4	5	6
					A	B

X's above—tie-up for Counter-balanced
O's above—tie-up for Jack-type

Sample



Treadling

Here is one repeat of the treadling draft. Of course, I feel that you can vary this that I am giving here and get many other interesting effects. The treadling given here is "Treadled as Drawn In."

Treadle No. 1 — 4 times

Treadle No. 2 — 5 times

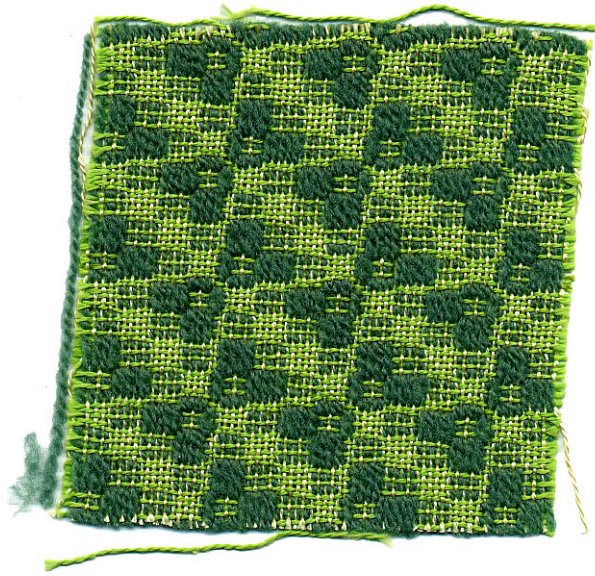
Treadle No. 3 — 5 times

Treadle No. 4 — 4 times

Treadle No. 3 — 1 time

Treadle No. 2 — 1 time

Of course there is a tabby thread be-



tween each pattern shot, and that is normally taken for granted in an overshot weave. It is normally not written or given, but you do have to alternate the A and B tabby treadles after every pattern shot.

Cost of the Fabric

For a 9 yard warp, which is what we wove for this sample, it took 1 lb. 5 oz. of the 20/2 Spring Green Egyptian Cotton. This costs \$5.00 per lb., so the warp cost for 9 yards was \$6.55 or the warp cost per yard on a 40" width material was 73c per yard.

For the weft in this, we used 1 lb. of the 20/2 egyptian cotton in the Popcorn color, which costs \$5.00. We also used 1 lb. 14 oz. of Bernat's Fabri, 2/18's worsted, which costs \$6.80 per lb. So we used \$12.75 in Fabri. Thus the total weft cost was \$17.75 for the 8¼ yards of finished fabric that we received. Thus, figuring 8¼ yards of finished fabric, the weft cost was \$2.16 per yard.

Warp Cost per yard	\$.73
Weft Cost per yard	2.16
	<hr/>
Fabric Cost per yard	\$2.89

More About the Sample

This was a very easy fabric to weave, although a slow one. Almost any overshot weave is slow, primarily because you have to change shuttles after every shot.

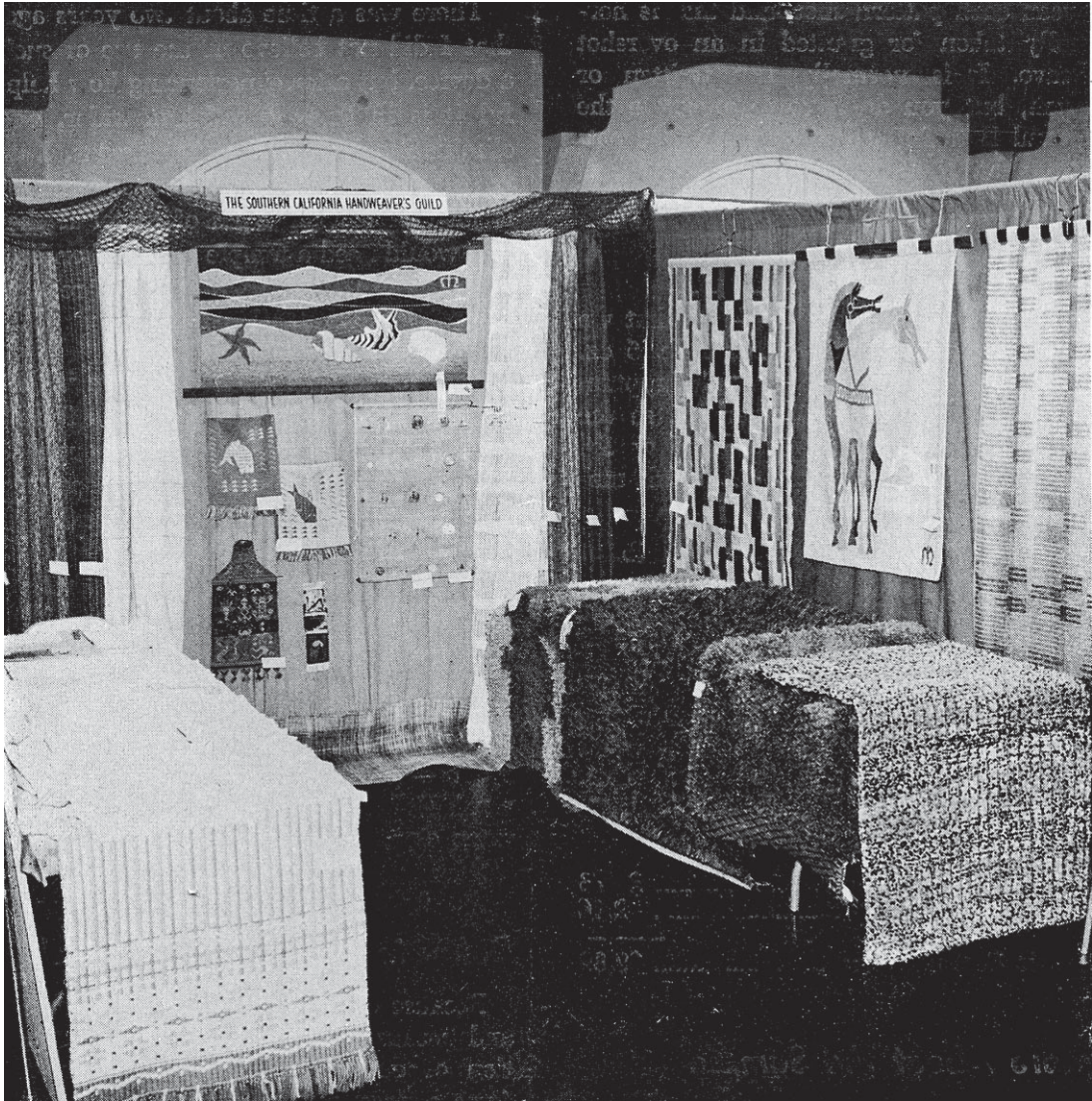
This type of fabric is one that you might find it easier to weave if you use a temple or stretcher. Particularly, you find this true if you have a cotton warp and tabby and a wool pattern thread. The wool has much more elasticity and will tend to pull the edges in somewhat, and this can be almost entirely eliminated with the use of a temple or stretcher.

There was a time about two years ago, that I did not believe in the use of such a device, but after experiencing how helpful it is in keeping a fabric wider, and eliminating broken selvage threads, I do recommend it. I should also say that it is just for certain types of material that you would need a temple or stretcher, and very few of them normally would require one.

Another thing I should mention is that if you do decide to weave such a fabric, you should be sure to order enough of the egyptian cotton warp or Fabri pattern thread to do your needs. We find that almost every time we order a new stock of these that they are so popular that we normally have a new dye lot available, and cannot duplicate the old dye lot that we have used. We had such an experience in this case, and it didn't make any difference with us. But if you were making bed-spreads or drapes, you certainly wouldn't want two colors to show in the warp or in the weft.

Delay in Orders Being Filled

Because of our recent move to Oregon, and because of the delay in the completion of our new shop in McMinnville (was supposed to be finished August 1st and still is not finished when this is being written on August 20th), there has been no answering of mail or filling of orders since about July 15th. We will not be able to fill and answer these letters until about September 1st, so we hope that you will bear with us because of this delay. All letters, inquiries and orders will be filled as quickly as possible starting September 1, 1962, our official opening date in our new shop.



ANOTHER OUTSTANDING EXHIBITION AT THE THIRD ANNUAL SOUTHERN CALIFORNIA HANDWEAVERS CONFERENCE, was the exhibition by the Southern California Handweavers Guild. Almost every piece in the exhibition had something unusual or different about it, that made this exhibition by the Southern California Handweavers Guild a very interesting display.

CLASSIFIED ADVERTISING

A classified advertising section will be tried out in Warp and Weft for a few months, to see if there is any interest or response. Why not advertise your old loom, duplicate equipment, and other such items in this section. Price per 5-line ad is \$4.00. Payment to accompany your advertising copy.

THE HANDWEAVERS WORKBASKET now stocks a complete and full range of Bernat colors in both the Fabri and Afghan yarns. Sample color cards, thirty cents, upon receipt of request. Grace D. Blum, **THE HANDWEAVERS WORKBASKET**, Box 691, R. R. 1, West Chicago, Illinois.

AMERICAN FABRICS MAGAZINE: This is a wonderful magazine, issued quarterly. It is full of ideas for the hobby weaver, usually has about 50 or more swatches of fabric in the magazine, and gives you the latest fashion trends, interesting articles on how these trends develop, the latest in all kinds of textiles and other interesting developments in the textile industry. Price is \$12.00 per yearly subscription or \$4.00 per single copy if just one copy is desired. Robin & Russ, 533 N. Adams St., McMinnville, Oregon.

10 NEW COLORS IN EGYPTIAN COTTON: Besides the 90 colors already available in the Egyptian cotton, 10 new shades of the latest fashion colors are available. Free samples upon request of same. This is available in size 20/2 only, 8400 yards per lb., fast colors, and it is \$5.00 per lb. **ROBIN & RUSS**, 533 N. Adams St., McMinnville, Oregon.

LINEN BOUCLE SPECIAL: For our grand opening, we have 4 colors of linen boucle on sale at \$3.20 per lb. This 100% linen boucle has 1800 yards per lb., and is available on about 1 lb. to 1 lb. 4 oz. tubes. It is available in Ocean Aqua, Citron Chartreuse, California Gold, and Pumpkin colors. Robin & Russ, 533 N. Adams St., McMinnville, Oregon.

FIBERGLASS BOUCLE: We have just received about 80 lbs. of a nice fiberglass boucle yarn. It is on cones of about 1½ lbs., and is \$3.20 per lb. Have not yet checked the yardage per lb., but it is a fairly fine boucle. Excellent for drapes and kitchen curtains, etc. Robin & Russ, 533 N. Adams St., McMinnville, Oregon.

STRUCTO LOOMS: In stock in all sizes, and available for immediate shipment in the 8", 4 and 8 harness, in the 20" or the 26" sizes. Robin & Russ, 533 North Adams St., McMinnville, Oregon.

50/50 LINEN AND RAYON. A new interesting slub yarn of 50% linen, 50% rayon. It is a size 9/1 with 2700 yards per lb., in natural linen with white rayon. Available on ½ lb. spools. Price is \$3.20 per lb. Excellent for drapes and upholstery. **ROBIN & RUSS**, 533 N. Adams St., McMinnville, Oregon.

BAG HANDLES AND FRAMES: A new printed brochure on available bag handles and frames has become available. If you are interested, write to: Robin & Russ, 533 N. Adams, McMinnville, Oregon.

EDERLIN 30/8 CABLE TWIST LINEN: This is a very tightly twisted linen cord with 1125 yards per lb. It normally sells for \$6.00 per lb. retail, and is on sale at \$2.40 per lb. while it lasts. On 1 lb. tubes. **ROBIN & RUSS**, 533 N. Adams St., McMinnville, Oregon.

A UNIQUE THREAD: A supported gold metallic, with a small white nub at intervals. Excellent in table linens, and in drapes and upholstery. About 3500 yards per lb. \$2.50 per lb., on about 4 oz. spools. Robin & Russ, 533 N. Adams St., McMinnville, Oregon.

BLACK SILK CHAINETTE WARP: This fine black silk chainette can be used for warp or weft. We have it on spools of from 2 to 4 oz. each. It has 10,000 yards per lb., and the price is \$5.60 per lb. **ROBIN & RUSS**, 533 N. Adams St., McMinnville, Oregon.

LIGHT BLUE AND NATURAL FLECKED SILK tweed is available. It has 11,000 yards per lb., and is excellent for weft in suiting, skirts, blouse material. On sale at \$3.20 per lb. on cones of about 1½ lbs. each. If you like it doubled for weft, we will do this for you for 50c per lb. extra, making it \$3.70 per lb. **ROBIN & RUSS**, 533 N. Adams St., McMinnville, Oregon.

7/2 DOUPPIONI SILK, for use as either Warp or Weft. 5800 yards per lb. 20 colors available. Free sample sheet upon request. Price is \$7.00 per lb., or \$2.00 per 4 oz. spool. **ROBIN & RUSS**, 533 N. Adams St., McMinnville, Oregon.

BABY POMPADOUR YARNS: This is a nice quality wool yarn with a rayon twist, for use in baby blankets, stoles, etc. Available in baby blue, pink, yellow, lavender, and white. 2,240 yards per lb. \$5.40 per lb., or 69c per 2 oz. skein. Robin & Russ, 533 N. Adams St., McMinnville, Oregon.

RAMIE DISH TOWELS FROM SWITZERLAND. A new stock of these has just come in, and they are excellent buys at \$1.25 each. Available in white and red or white and blue. Will not shrink, stretch, rot, resists mildew, twice as strong when wet as when dry, very absorbent. Robin & Russ, 533 N. Adams St., McMinnville, Oregon.

COTTON FLAKE WITH GOLD TWIST: Available in natural only, this is a very nice yarn, excellent in drapes and upholstery. It has approximately 1,400 yards per lb., is available on 1 lb. cones only and is \$3.75 per lb. Robin & Russ, 533 N. Adams St., McMinnville, Oregon.

warp and weft

533 North Adams Street,
McMINNVILLE, OREGON

The Weaver's Marketplace

NEW!!!

Functional Overshot by Grace D. Blum
A basic source for modern designs.
Contains concise directions for weaving almost any overshot threading, in 24 different methods and 32 woven swatches.

\$16.50 per copy

Mailed prepaid when
check accompanies order.

Hand Weavers' Work Basket

Box 691, R.R. 1 West Chicago, Illinois

HANDWEAVING YARNS and SUPPLIES

A wide variety of distinctive yarns, developed especially for handweaving is available for prompt shipment in quantities to suit your needs.

The Handweaver's Headquarters

Lily Mills Company

Dept. HWWW Shelby, N. C.

A Complete Line YARNS LOOMS AND WEAVING SUPPLIES

GOLDEN RULE PRODUCTS

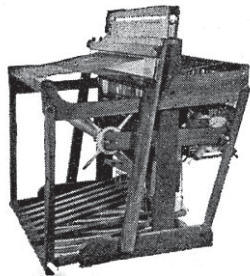
Write for a catalogue and list of agents

Hughes Fawcett, Inc.

P.O. Box 276 Dunellen, New Jersey

THE NORWOOD LOOM

1. Custom built, of Cherry.
2. 22", 30", 40", 50".
3. Rising Shed—Sectional beam.
4. Multiple harnesses and special looms to order.
5. Adapted to handicapped by special prescription.
6. Folding models only.



The Norwood Loom Co.

P.O. Box 272 — Baldwin, Michigan

BULK RATE
U.S. POSTAGE
PAID
Permit No. 125
McMinnville, Oregon