

warp and weft

Vol. XIX, No. 2

March, 1966

warp and weft

Published monthly (except July and August)
by Robin & Russ Handweavers, 533 North
Adams Street, McMinnville, Oregon.

Subscription: \$4.00 per year.

Back Issues: 40c each, plus 4c postage.

Editor: Russell E. Groff,

Assistant Editor: Robin Groff.

Vol. XIX, No. 3

March, 1966

A Word from the Editor:

Three interesting projects are on the looms now. One is in my opinion, one of the richest woolen fabrics I have ever woven, and we will sample it next month in Warp and Weft.

Another is a silk project in an 8 harness basket weave that is very hard to weave. It is hard to weave because the silk warp is a very slubby, textured, tussah silk, which clings together very much. I've had to use a warp dressing called "WEAVOL" in order to do any of the weaving. If I didn't have this to use, I know that I just couldn't weave it. What I do is spray it on the warp threads with a windex atomizer just in back of the heddles, and also in front of the heddles. This makes quite a difference, and now I think that I have eliminated about 75 per cent of the clinging characteristics of this silk threads by the use of the "WEAVOL." Then, when you are finished with this fabric, you dip it in water, and the weavol is dissolved out of the fabric.

This is one of the multiple harness projects that I'm working on in the silk, but when I write it up, I'm going to recommend that a smoother thread be used for the warp than that which I'm using.

Also, I should mention that many of our different projects are woven in Ramie, in place of linen, but this is because it is a fiber that we specialize in, and have in stock; so thus, many of our samples are woven of what we have available.

It has been eleven years that we have been publishing Warp and Weft, and believe it or not, sometimes when I try to think of an idea for a sample I draw a blank for a good long while, and then finally, when I put a sample

Page 2

warp on the loom, we can eventually work a project out. However, I don't know whether most of you realize it or not, but it surely is a task to keep ahead of a monthly deadline such as this by planning ahead. AND SOMETIMES, I DON'T PLAN AHEAD VERY WELL.

I always try to plan on those two summer months of no monthly issues as a time for myself to be able to experiment, and plan projects in advance. This works out for awhile, and I do get two or three projects ahead, but from Christmas time on, the lack of planning catches up, and really keeps us stepping here in the shop to try and get everything done.

In the shop this month, we had some interesting new threads come in. We purchased 100 lbs. of a dark natural grey 2 lea linen from Scotland which just come in. Also, we purchased another lot of 120 lbs. of a 1½ lea boiled linen which was spun here in Oregon, which is very attractive, and which is an exceptionally good buy. Also, we have 5 new colors being dyed in the 6/2 and 7/2 silks for addition to our stock, and we just received a lot of a beautiful 6/2 spun douppioni silk in red. This is quite smooth, and is a very nice quality.

Well, enough chatter for this month, and back to the sample.

Russell E. Groff, Editor

This Month's Cover:

This is a close-up of a very open, sheer type drapery which was displayed at the Northern California Handweavers Conference in 1965.

Most of the threads were fairly heavy, slubby, textured threads.

Please note how the large open weave areas are supported at intervals by a portion of a tighter woven fabric, with more weft shots.

These drapes would be just wonderful in places where they would be permanent and not moved open and shut like most drapes are.

I believe that this was one of the pieces woven by Poly Yori, of Lake Almanor, Calif. and it was beautifully done.

A picture like this just makes you want to try and make something similar yourself. The

old saying is "A picture is worth a thousand words," and I think that this is particularly true here in this cover photograph.

This Month's Book Review:

This month's book review is of the book **CREATE WITH YARN**, by Ethel Jane Beiter. This book is dealing primarily with the two handcrafts of stitchery and rug-hooking.

I feel that this is an outstanding text on these two subjects.

The first portion of the book deals with rug hooking, and is excellent for the step by step procedures which are given. The illustrations of these step by step procedures are outstanding. They cover the equipment and materials necessary, how to make and prepare these pieces of equipment and materials, and give step by step illustrations of these procedures.

The section on designs for rugs, and sources of designs, and methods and ways of making your own designs is also clear and concise and easy to understand.

Many excellent illustrations (some in color) of designs for rugs, and finished rugs and other pieces are given. I think that with this as a text, I could do these rug hooking projects without any trouble.

The stitchery section is just as outstanding. There are about 30 different stitches well illustrated with four or five illustrations of each of these different stitches given. These are taught and suggested for use in samplers, that you might acquaint yourself with the possibilities of stitchery. Then there is a section on different designs with just a few stitches incorporated in the projects, and after that comes a section of designs with many different stitches used. Each of these explanations is accompanied by a clear, well duplicated photograph, a close-up of the different projects.

The next section of the book is devoted to the use of stitchery and applique, with many, many exciting ideas and illustrations.

There is a pleasing section on tapestries made of stitchery; and then the final section of the book is a section on knotted rug techniques which are so popular today.

As Robin stated, when you read this book, it is so well presented that it just makes you want to start one of these projects.

TITLE: CREATE WITH YARN

SUB-TITLE: Hooking, Stitchery

AUTHOR: Ethel Jane Beiter

PUBLISHER: International Textbook Co.
Scranton, Penna.

PRICE: \$7.50 plus 20c postage.

AVAILABLE: It is available directly from the publishers or from Robin & Russ Handweavers, if desired.

Northern California Handweavers Conference

The 14th Annual Conference of the Northern California Handweavers will be held this year April 23rd and 24th at the Claremont Hotel in Berkeley, California. The theme of the conference is "Nature, Our Greatest Designer," and this will be illustrated by microphotographs by Stenes S. Heaton. In his presentation, Mr. Heaton will try to emphasize ways in which weavers can learn from nature.

Registration is \$5.00, and this includes exhibits, jury reports, program, luncheon, fashion shows and commercial displays. The closing deadline is April 4th, and so be sure to send registrations to Iola Imhof, 1015 Alvarado Road, Berkeley, California.

Nova Scotia Handcraft Exhibition

The Western Nova Scotia Handcraft Exhibition will be held in the Hebron Consolidated School, Hebron, Yarmouth Co., Nova Scotia on Wednesday and Thursday, July 20th and 21st, 1966. It will be open from 1:00 to 10:00 p.m. daily.

This exhibit is sponsored by the Yarmouth County and Fort Anne Weavers Guilds. There will be demonstrations in various crafts, exhibits, and a salesroom.

If you are planning a Canadian vacation this summer, why not try and take in this exhibit, sale and demonstration of many different handcrafts.

GOthic CROSS:

The sample this month is primarily a linen weave, and is a 4 harness twill variation which is excellent for drapes, upholstery, and table linens of all kinds.

THREADING DRAFT:

4		x	x	x		x		x	x	x		x
3	x		x		x		x		x		x	
2		x			x		x					x
1		x		x		x	x		x		x	

REED USED:

A 15 dent reed was used, and it was double-sleyed, 2 ends per dent, or 30 threads per inch.

TIE-UP DRAFT:

4	o	x	x	x	o	x
3	x	o	x	x	x	o
2	x	x	o	x	o	x
1	x	x	x	o	x	o

1 2 3 4 A B
5 6

X—Tie-up for counter-balanced loom
O—tie-up for jack-type loom.

TIE-UP DRAFT NOTE:

Please note that on the jack-type looms, we had a sort of direct tie-up, where one treadle is tied to one harness for the 4 pattern treadles. This might be hard to do on some counter-balanced looms. That is, it is fairly hard to have a direct tie-up of one harness to one treadle on a counter-balanced loom. However, if you are careful in your weaving, you can do it, but with some trouble. A sort of double shed opening sometimes results, and you must be sure that you throw your shuttle through the correct shed opening.

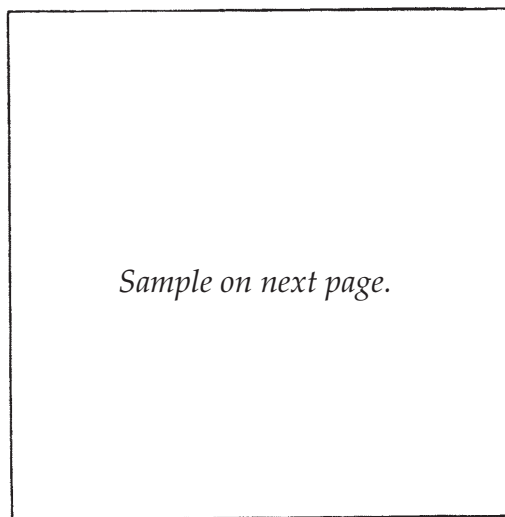
WARP:

The warp is a 20/2 mercerized ramie in Eggshell Natural color.

WEFT:

The weft is a 20/2 mercerized ramie in a BLUSH PINK color.

SAMPLE:

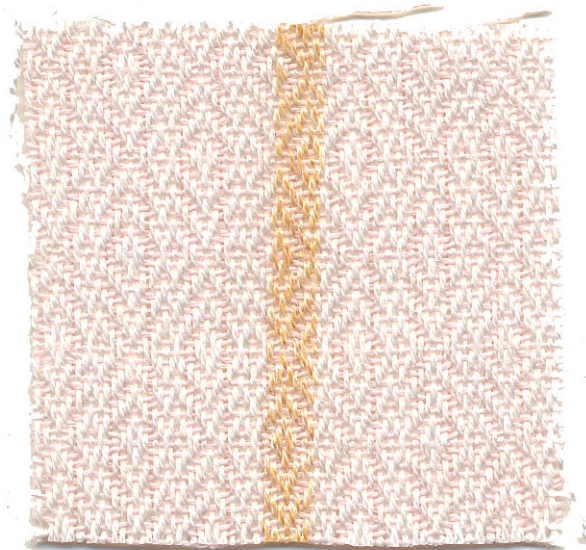


Sample on next page.

TREADLING SEQUENCE:

We are giving you just one treading sequence here, the one that is used in this sample. However, on this set-up, there are many different treading variations that could be used and they would provide many interesting variations.

1. Treadle No. 1 — Blush Pink Ramie
2. Treadle No. 2 — Blush Pink Ramie
3. Treadle No. 3 — Blush Pink Ramie
4. Treadle No. 4 — Blush Pink Ramie
5. Treadle No. 1 — Blush Pink Ramie
6. Treadle No. 2 — Blush Pink Ramie
7. Treadle No. 1 — Blush Pink Ramie
8. Treadle No. 4 — Blush Pink Ramie
9. Treadle No. 1 — Blush Pink Ramie
10. Treadle No. 2 — Blush Pink Ramie



11. Treadle No. 3 – Blush Pink Ramie
12. Treadle No. 4 – Blush Pink Ramie
13. Treadle No. 1 – Blush Pink Ramie
- NOTE THAT THIS IS THE
CENTER OF THE PATTERN
14. Treadle No. 4 – Blush Pink Ramie
15. Treadle No. 3 – Blush Pink Ramie
16. Treadle No. 2 – Blush Pink Ramie
17. Treadle No. 1 – Blush Pink Ramie
18. Treadle No. 4 – Blush Pink Ramie
19. Treadle No. 1 – Blush Pink Ramie
20. Treadle No. 2 – Blush Pink Ramie
21. Treadle No. 1 – Blush Pink Ramie
22. Treadle No. 4 – Blush Pink Ramie
23. Treadle No. 3 – Blush Pink Ramie
24. Treadle No. 2 – Blush Pink Ramie

END OF ONE PATTERN REPEAT.

REPEAT OVER AND OVER AS DESIRED.
ON THE LAST REPEAT OF YOUR PAT-
TERN, ADD A No. 25, Treadle No. 1 –
Blush Pink Ramie, to complete the pattern unit
and balance it so that it begins and ends with
the same pattern treadles.

MORE ABOUT THIS PATTERN:

Our sample has been washed and pressed
this month, that we can better get an idea of
the pattern. Notice that the result is a small
diamond variation, with three different out-
lines of the diamond setting off the center re-
peat of the diamond pattern.

Also notice that in the weaving a slight
ribbed effect results with alternate ribs of 5 and
7 threads showing up if you check the sample
carefully.

I wanted to also say that a firm double beat
is best for almost any linen or ramie that is
used for hand-weaving. This is particularly
true of Linen, Ramie, and the Bast family of
fibers. The Bast family of fibers is a fiber ob-
tained from any plant having an outer fiber
and an inner core. This Bast family of fibers
includes Linen, Jute, Hemp, Ramie, Sunn,
Kenaf, and Urena. This family of fibers tends
to have more stiffness and body to it than
many of the other fibers.

On a jack-type loom, using the tie-up given
for a jack-type loom, the wrong side of the
pattern weaves up. You could reverse this by
tying up the jack type loom just like the coun-
ter-balanced one, but to my way of thinking,
this is just extra time and effort expended.

A color contrast in the warp and weft of this
pattern will make it easier to weave and to fol-
low the pattern. When they are two color val-
ues as close as this natural and pink are, it is
harder to keep track of your treadling se-
quence than if you have a contrast in colors.

Another thing that I want to mention is the
color of the 20/2 Mercerized Eggshell Natural
ramie. This is a natural color, and due to per-
fect growing conditions, the natural color of
the Ramie is much whiter than other fibers
such as linen. Thus, this lot of 20/2 Eggshell
Natural we have on hand is a superior quality
product with a very, very, natural white color.
We have had many lots of Ramie which are
much darker in the natural color, but this is
the lightest natural we have ever had.

Also, after the first washing of this piece, you
will have no more shrinkage, and much, much
durability. Why not try it.

COST OF THE THREADS USED:

The 20/2 Mercerized Ramie is available in
about 10 colors, and the next time we order
it, we will add another 2 or 3 colors until we
have about 20 colors available. A free sample
sheet of the current colors available is yours
upon request. The mercerized ramie is \$5.00
per lb., or \$1.25 per 4 oz. spool. It has 3,000
yards per lb., or 750 yards per four ounce
spool.

COST OF THE FABRIC:

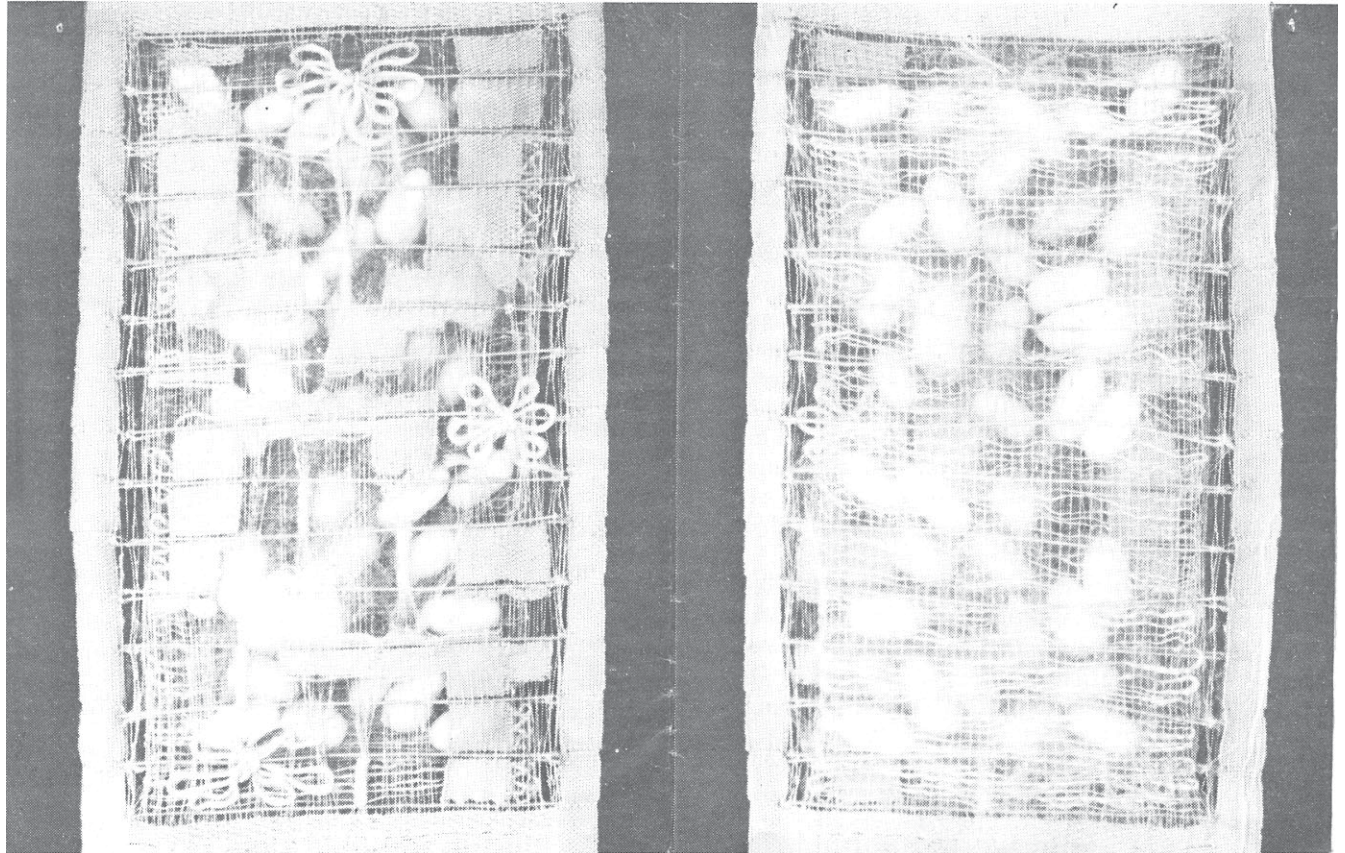
Our warp was 40" wide, 30 threads per
inch. We had a 10 yard warp, and it took
some 4 lbs. of the 20/2 mercerized eggshell
natural ramie for warp. Thus, the warp cost
was \$20.00 or \$2.00 per yard.

In the weft on the 10 yard warp, we used 2
lbs. 10 oz. of the 20/2 Blush Pink Ramie. We
have 9 yards of finished fabric. Thus the weft
cost for 9 yards was \$13.10 or \$1.46 per yard
for the weft thread.

WARP COST PER YARD	\$2.00
WEFT COST PER YARD	1.46
FABRIC COST PER YARD	\$3.46

PLACE-MATS IN A 14" WIDTH:

This is an ideal pattern for placemats, for
table cloths, for card table covers and the like,



and so we are giving herewith a plan for the placemats, 14" wide on the loom.

When woven, these mats will be about 13" wide x 19" long, plus hem.

Threading plan for mats.

- 1. Selvage, 2, 1, 4, 3, 2, 1 06 thds.
 - 2. 17 Pattern repeats times
24 threads in one pattern
repeat 408 thds.
 - 3. One thread to balance and
it is on No. 4 harness 01 thds.
 - 4. Selvage, 1, 2, 3, 4, 1 05 thds.
- TOTAL NUMBER OF
WARP ENDS 420 thds.

**A DOUBLE WEAVE WALL HANGING
INCORPORATING SILK COCOONS
IN YELLOW AND WHITE.**

I don't know just how Mrs. Connie Hinds of San Francisco did it, but this wall hanging in a double weave showed great originality, and was beautifully done.

Some of the silk cocoons in this wall hanging were of a yellow silk, and some were of a white silk. The back view of this wall hanging is the one showing the plain weave area of the

double weave, and in this view some of the cocoons appear darker and lighter than others. This was the difference in the color of the cocoons. I believe that some of these cocoons could have been classed as tussah silk, and some of regular silk from commercially fed silk worms.

This wall hanging was chosen as one of the outstanding at this conference, and it was called "Singing Silks."

I believe that Mrs. Hinds wove the hanging, put the silk worms in and then they spun their cocoons.

The pattern side of the wall hanging symbolizes worms, cocoons and moths.

Over each face of the wall hanging, in both front and back in other words, are gossamer filaments of silk the worms were persuaded to spread out and spin. Actually, this is a part of hammock spinning, wherein the silk worms do the hammock spinning so that they can support the silk cocoons, which they spin after they have spun the supporting threads. Mrs. Hinds said that in some instances, the silk worms were doubtless very much frustrated.

I believe that Mrs. Hinds has a hobby of raising silk worms to spin silk, and that this wall hanging was her way of showing what an interesting hobby it was.

CLASSIFIED ADVERTISING

Why not advertise your old loom, duplicate equipment, and other such items in this section. Price per 5-line ad is \$4.00. Payment to accompany your advertising copy.

IN STOCK:

48 colors Swedish Linen. (Color cards 50c). Fabri and Afghan. (Color cards 35c) The Handweavers' Workbasket. Box 829, R. 1, West Chicago, Illinois 60185.

HIGH FASHION TWEED YARN:

We have some 14 colors available in high fashion wool tweeds, most of which were manufactured in Oregon. Free samples of these upon request. Price is \$3.20 per lb., and limited amounts of the various colors are available. Robin & Russ, 533 North Adams St., McMinnville, Oregon.

6/2 RED DOUPPIONI SILK:

A beautiful red color in this 4 ply silk. It is good for warp or weft. About 5,000 yards per lb. Price is \$7.00 per lb., or \$2.00 per 4 oz. spool. Robin & Russ, 533 North Adams St., McMinnville, Oregon 97128.

CRESLAN AND WOOL TWEED:

This is a good strong 1½ run yarn with 2400 yards per lb. While single ply, it makes an excellent warp. Has flecks of aqua blue and aqua green on a sort of light oxford background. Price is \$3.20 per lb. and it is available on ½ lb. spools or on cones of about 2 lbs. 4 ozs. each. Robin & Russ, 533 North Adams St., McMinnville, Oregon.

LOOM ANCHORS TO STOP YOUR

LOOM FROM MOVING:

An excellent aid to the hand weaver are these pressure adhesive felt pads, which are also used in the textile industry to hold looms in place. Just remove the plastic covering and put a pad under each corner of the loom. Will not move back and forth, but can be picked straight up. A set of 4 of these pads are \$1.50 plus 10c postage. Well worth while. Will not mar the floor in any way, nor will it damage a floor. Not usable on rugs. Robin & Russ, 533 North Adams St., McMinnville, Oregon.

CURVED SWEDISH SCISSORS:

Excellent for use in making flossa and rya rugs, and excellent for use around the loom. Trim threads but avoid cutting others because of the curve on these scissors. Price is \$4.50 per pair. Robin & Russ, 533 North Adams St., McMinnville, Oregon.

DELUXE METAL SKEIN WINDER

Well made by the manufacturers of Leclerc Looms, this skein winder is adjustable to different sizes just by turning a wing nut. Sturdy and durable, and will hold almost any size skein. Price is \$12.50. A stand for this is also available to make it a floor model for \$7.50 extra if desired. It normally has a clamp on it for fastening to table edge, etc. Robin & Russ, 533 North Adams St., McMinnville, Oregon.

ORANGE LINEN BOUCLE:

Has 1800 yards per lb. Available on ½ lb. spools or on tubes of about 1 lb. 4 ozs. each. A good price at \$3.20 per lb. Robin & Russ, 533 North Adams St., McMinnville, Oregon.

NATURAL RAYON & COTTON BOUCLE:

It has about 1600 yards per lb., comes on ½ lb. spools, and would be excellent for drapes, upholstery, table linens, mats etc. Reasonably priced at \$2.40 per lb. Robin & Russ, 533 North Adams St., McMinnville, Oregon.

NETTING NEEDLES FOR USE

AS PICK-UP STICKS

We have an extra large size, approximately ten inches long, which sells for 50c plus 6c postage. Five other smaller sizes are also available at 50c each. Robin & Russ, 533 North Adams St., McMinnville, Oregon.

BLEACHED WHITE THIRSTY LINEN

is available in two sizes. Available in a 4/1 with 1200 yards per lb., or a slightly slubbier and finer 7/1 with 2100 yards per lb. This linen is imported from Scotland and comes on 1½ lb. cones (approximately) and it is reasonably priced at \$2.40 per lb. Robin & Russ, 533 North Adams St., McMinnville, Oregon 97128.

HEAVY FLAKE LINEN AND RAYON:

This is a very attractive white rayon combined with a dark grey linen in a flake twist. It has 900 yards per lb., and is a yarn that was spun to order for Robin & Russ. Available on ½ lb. spools or cones of about 1½ lbs. each. The price is \$4.00 per lb. Robin & Russ, 533 North Adams St., McMinnville, Oregon 97128.

ZEFRA AND LINEN:

in a natural white combination. This is a nub yarn somewhat like a linen and acetate nub that used to be available. Excellent for upholstery, drapery, mats, etc. 1600 yards per lb., it is \$3.20 per lb. Available on ½ lb. spools or cones of about 1½ lbs. Robin & Russ, 533 North Adams St., McMinnville, Oregon

GOLD SPIRAL TWIST RAYON BOUCLE:

A natural rayon boucle with a spiral twist gold metallic, which has about 1600 yards per lb. Available on ½ lb. spools at \$1.60 per spool or \$3.20 per lb. Robin & Russ, 533 North Adams St., McMinnville, Oregon 97128.

8/5 NATURAL LINEN RUG WARP:

About 240 yards per spool, on approximately ½ lb. spools. Excellent for Flossa, Rya, and other rugs warps. \$1.80 per spool. Robin & Russ, 533 North Adams St., McMinnville, Oregon 97128.

DYE PLANTS AND DYEING:

One of the best manuals I have ever seen on this subject. Reasonably priced at \$1.65 plus 10c postage. Robin & Russ, 533 North Adams St., McMinnville, Oregon 97128.

The Weaver's Marketplace

3 Manuals from Robin & Russ

1. CARD-WEAVING _____ \$3.50
2. Sectional WARPING made easy — \$2.50
3. WARP and WEFT from TIBET — \$3.50
10c p.p. each manual

Robin and Russ Handweavers

533 North Adams St. McMinnville, Oregon

NEW!!!

Functional Overshot by Grace D. Blum
A basic source for modern designs.
Contains concise directions for weaving almost any overshot threading, in 24 different methods and 32 woven swatches. \$16.50 per copy.

Mailed prepaid when
check accompanies order.

Hand Weavers' Work Basket

Box 691, R.R. 1 West Chicago, Illinois

HANDWEAVING

YARNS and SUPPLIES

A wide variety of distinctive yarns, developed especially for handweaving is available for prompt shipment in quantities to suit your needs.

The Handweaver's Headquarters

Lily Mills Company

Dept. HWWW Shelby, N. C.

NORWOOD

The Aristocrat of Looms

for free brochure
write to:

The NORWOOD LOOM Co.,
P. O. Box 272 Baldwin, Michigan

warp and weft

533 NORTH ADAMS STREET
McMINNVILLE, OREGON 97128

BULK RATE
U. S. POSTAGE
PAID
Permit No. 125
McMinnville, Oregon