

warp and weft

Vol. XXVI, No. 2

February, 1973

warp and weft

Published monthly (except July and August) by Robin & Russ Handweavers, 533 North Adams Street, McMinnville, Oregon 97128

Subscription: \$4.50 per year.

Back Issues: 45¢ each plus 8¢ postage.

Editor: Russell E. Groff

Vol. XXVI, No. 2

February, 1973

A Word from the Editor

Yes, I know what you are going to say. Jiminy Crickets, Warp and Weft is late again. But I can truthfully say that the next issue is also in progress, and will be at the printers a week after this one, and it won't be so long between issues now.

And, the word is "That we've gone and done it." Yes, last weekend, I flew down to North Hollywood, California with two other persons, and purchased the patterns, and rights, and two patents, on the loom formerly made by Bill Walling, in North Hollywood, California.

After all the details were ironed out, I rented a truck, and we loaded all the power tools, and all of the loom patterns, and parts left over, and drove that 20 foot long truck back to Oregon, some 1150 miles, in two days.

Now, all the loom parts, jigs, power tools, etc., are in the shop of the cabinet maker, who is getting ready to manufacture these looms for us. And, we hope to have our first sample models ready within a month to six weeks, for me to try out and see if it is up to the outstanding quality that Bill Walling put into all of his looms. If we can make it or have it made just as well as Bill made his, we will have an outstanding loom available for the handweavers.

There has been a lot of thought, investigation, and planning go into this step, and you can be sure it is with many qualms, that we venture into this new field for us, that of making 36" and 46" floor looms for our own shop and for resale. It will take a long time, I'm sure to see if the venture is successful,

Page 2

but I do feel that it was one of the things that was lacking in our shop, and now, after it is established, our cabinet maker says that he hopes to be able to make a loom every week for us. Time will tell, and you subscribers will be the first to know if this new venture is a success or a failure.

We are going to change the name of the loom, as per the request of Bill Walling, and so, we are going to have a contest, to try and come up with a name for this new loom. See the details a little later in this issue.

And, the latest here in the shop also is the fact that our shipment of two sizes of linen, in 10 colors, has just come in from Scotland. We now have 11 colors in sunfast and wash-fast colors in two sizes of linen. We have it in a 2½ lea, slubby linen, which is outstanding for weft in placemats, table linens, upholstery and the like. And we also have the same eleven colors in a size 10/2 linen, with 1500 yards per lb. You can imagine how pleased I am with these.

We've had some sad news about our nice little Castle Type Spinning Wheel from Norway. The man who makes these is quite seriously ill, and we are hoping that he makes a full recovery, and is able to get back to his specialty of doing what he seems to love best, that of working with wood, and making spinning wheels. The demand for good spinning wheels is now greater than ever, so if you know of someone making a good spinning wheel for resale, we would like you to ask them to contact us.

Have you ever had a scare like the one we had a couple of weeks ago. We were notified that we were to be fined by U. S. customs, because properly filled-out papers had not been received by customs last summer. We did not even know that these papers had never been received, until about a week before we were told that we would be fined a tremendous amount. You can imagine the scurrying around that took place, trying to prove that we had asked and tried to get the papers last June, and that we thought they had been received. Some cablegrams went off to Ireland and Holland, the two main manufacturers of this yarn, and finally the details were all ironed out, but not before a scare that lasted a week.

It is fun to import yarns that we cannot locate here in the U. S. A., but sometimes the trials and tribulations of seeing that the necessary customs requirements are met is such a hassle, that sometimes I wonder if it is worth the effort. Oh well, it all works out eventually.

Russell E. Groff, *Editor*

A CONTEST TO NAME A LOOM

On the cover of Warp and Weft this month, is a picture of the loom that we hope to have manufactured for us. This loom has been made by Bill Walling in North Hollywood, California, and we have purchased the rights and patents on this loom, and will have it manufactured.

At the request of Bill Walling, he has asked that the name of this loom be changed, so we have decided to see if one of our subscribers can come up with a name or a design and name for a trademark for this loom.

We are going to offer a \$50.00 merchandise award of any of our yarns, books, or weaving accessories of the winner's choice, for the name or trademark design that we choose. If the same name or design is submitted by two persons, the one with the earliest postmark will be the winner. We are going to make this contest open until April 30th, and at that time, we will choose the winner, and will furnish them with the samples and our catalogue, and let them choose their award.

I might mention that this loom has one of the easiest lifting actions on the harnesses that I have ever seen, and I feel it is one of the most outstanding looms I've ever seen, and so we do hope that we have lots of entries.

Send your suggestion of name and trademark, or name itself, and let us hear from all of you.

Send your entries to Robin & Russ Handweavers, c/o Loom Name Contest, 533 North Adams St., McMinnville, Oregon 97128.

NOTE: Cover photography by Bill Walling

An Announcement for Handweavers

From Bill and Marie Walling of North Hollywood, California.

"It is the desire of myself and my wife to see the perpetuation of the Walling type floor loom; to which we both gave willingly so much of our years, our hopes, our energies, and our dreams.

We believe many of the people who in the past invested in the results of this husband and wife team, will be pleased to learn that a continuance of a Walling type floor loom is assured.

So to you, Russell E. Groff, our heartfelt appreciation for carrying on a mechanism that launched a standard of the highest quality, and for keeping alive our dream we always believed in.

To your success:
Signed Bill and Marie Walling

This Month's Book Review

We are pleased to announce this month, that a book which has been out of print for about a year, "SPIN, DYE AND WEAVE YOUR OWN WOOL," by Molly Duncan, has been reprinted here in the U.S.A., and is once again available at the same reasonable price that it used to be.

This book is noted mainly for its excellence in the instructions given for the craft of hand-spinning. It gives one step by step instructions for this most interesting craft.

Molly Duncan starts with the selection and purchase of a fleece, she tells you how to prepare it, and teaches you how to spin small amounts with a handspindle. Continuing on from this, she describes the spinning wheel, explains what each part is, and how it works, tells you what to consider if you decide to buy a spinning wheel, and then she proceeds to teach you to spin, ply, and skein your own wool.

There are more than 50 photographs and diagrams in this book, and then the author continues on from the spinning processes, and shows how one can scour, bleach and dye their own handspun yarns with chemical and natural dyes.

Continued on Page 6

LINCOLN LOGS

This is a log cabin weave, that is much fun to weave, and is actually, a plain weave fabric. The pattern results from just the change of colors.

TIE-UP DRAFT:

4	X	X	O	O	X	O
3	X	O	O	X	O	X
2	O	O	X	X	X	O
1	O	X	X	O	O	X
	1	2	3	4	5	6
					A	B

X — tie-up for Counter-balanced looms.
 O — tie-up for Jack-type looms.

4		O		O		O		O		O		X		X
3		X		X		X		X		X		O		O
2		O		O		O		O		O		X		X
1	X		X		X		X		X		X	O		O

WARP

Two threads are used in the warp, and both are tweed yarns from England.

- O — bleached white wool tweed from England, which has 1480 yards per lb.
- X — medium green tweed with flecks of kelly green and aqua blue. It has about 1800 yards per lb.

WEFT

Two threads are used in the weft. One of these is the natural color called Smoke Natural Tweed from Donegal. It has about 1200 yards per lb.

The second tweed is one of our new dark heather grey English tweeds with flecks of red, natural and black. This one is a good bit heavier, and has 800 yards per lb.

REED USED

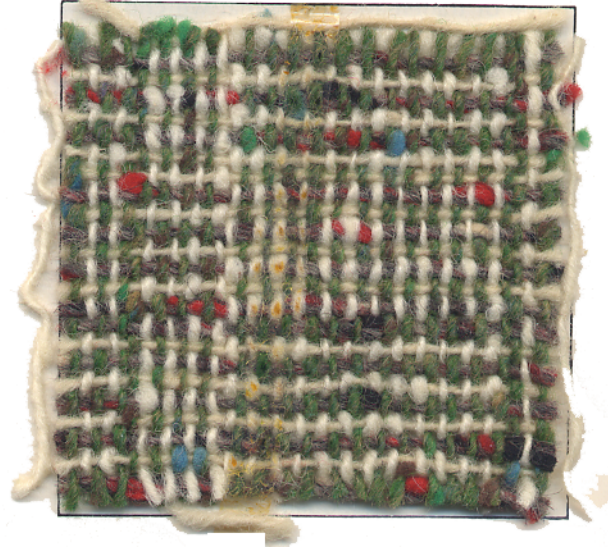
An 8-dent reed was used, and it was double sleyed, two ends per dent, or 16 threads per inch.

MORE ABOUT THE FABRIC

The log cabin weave is one of our simplest and easiest weaves to use in designing, and is one that we have not had in Warp and Weft for several years. As a result, we have been experimenting on a series of log cabin weaves, and we hope to feature them for the next several months.

Page 4

SAMPLE:



Please note that our warp is all the single ply tweed yarn. Many persons are afraid to use this for warp, but we do use it this way constantly, and seem to get along quite well without any problems. I think that there are two keys to the successful use of the single ply tweed or homespun as warp, or perhaps even three.

1. Do not set the warp too closely. If you can, give the thread all the room you can. If you have it 16 threads per inch, use an 8 dent reed with two per dent, rather than one per dent in a 16 dent.

2. Beat the weft thread back with the shed open, and while the beater is still forward against the web, change to the next shed, and beat again, lighter this time. This clears the shed, and helps separate those threads that tend to cling together.

3. We find that single ply tweed or homespun yarn, quite often has quite a twist and will tend to backlash and twist around itself and other threads. We find that if you do a warp on sectional warp beam, having the threads come through a tension device, that you have much greater luck than if you try to chain a warp.

And there is another aid or crutch or thing that you can do to help. You can use a smooth two or three ply thread for a selvage on the first eight threads on each selvage edge. This practically eliminates any troubles you might have on your edges fraying or fuzzing. We like to use a 10/3 cotton, or the fine three ply nylon that we have on 2 oz. tubes in about 18 colors. We wind say eight ends on a weighted spool, and hang it over the back beam on the loom, and then put it through the heddles. And after a while, when the spool has moved up to where it almost touches the back beam, then you walk back and unwind enough again so that it almost touches the floor. In other words, it is put on the loom with its own tension, and not put on the warp beam with the tweed or homespun.

And another solution that we just heard about that is fascinating to me, is a new method of getting rid of the backlash or twist in a thread. If you have a canning boiler with a stand, you can put some water in, just below the stand, set your cone of yarn on the stand, and without it touching the water, you bring the water to a boil, keep the lid on, and steam your yarn. About 30 minutes for a pound cone. This tends to set the twist of the yarn, and as a result, it does not backlash or twist on itself as it sometimes will. We did this on one of the yarns, a 50% silk, 50% worsted, and had no trouble at all with the yarn after it was steamed, but before we did this, we found quite a bit of backlash.

We also find that the double beat, or second beat, after you change the thread, helps separate any of the threads that have a tendency to cling together. This is important and a great help in weaving with a warp of this kind.

TREADLING SEQUENCE

There are 32 shots in one complete pattern repeat. And you treadle with two threads, alternating the threads, exactly as the sequence calls for in the threading draft.

1. Treadle #4 — Natural Donegal Tweed
2. Treadle #3 — Dark Heather English Tweed
3. Treadle #2 — Natural Donegal Tweed
4. Treadle #1 — Dark Heather English Tweed
5. Treadle #4 — Natural Donegal Tweed
6. Treadle #3 — Dark Heather English Tweed
7. Treadle #2 — Natural Donegal Tweed
8. Treadle #1 — Dark Heather English Tweed
9. Treadle #4 — Dark Heather English Tweed
10. Treadle #3 — Natural Donegal Tweed
11. Treadle #2 — Dark Heather English Tweed
12. Treadle #1 — Natural Donegal Tweed
13. Treadle #4 — Dark Heather English Tweed
14. Treadle #3 — Natural Donegal Tweed
15. Treadle #2 — Dark Heather English Tweed
16. Treadle #1 — Natural Donegal Tweed
17. Treadle #4 — Dark Heather English Tweed
18. Treadle #3 — Natural Donegal Tweed
19. Treadle #2 — Dark Heather English Tweed
20. Treadle #1 — Natural Donegal Tweed
21. Treadle #4 — Dark Heather English Tweed
22. Treadle #3 — Natural Donegal Tweed
23. Treadle #2 — Dark Heather English Tweed
24. Treadle #1 — Natural Donegal Tweed
25. Treadle #4 — Dark Heather English Tweed
26. Treadle #3 — Natural Donegal Tweed
27. Treadle #2 — Dark Heather English Tweed
28. Treadle #1 — Natural Donegal Tweed
29. Treadle #4 — Dark Heather English Tweed
30. Treadle #3 — Natural Donegal Tweed
31. Treadle #2 — Dark Heather English Tweed
32. Treadle #1 — Natural Donegal Tweed

END OF ONE COMPLETE PATTERN REPEAT. Repeat over and over as desired.

MORE ABOUT THE THREADS USED

The white nubby wool, and the natural nubby wool, and the dark green with the colored flecks are called "Donegal" wool tweeds. We purchased quite a quantity of this in England, and have about 15 different colors in the tweed, as well as the natural and white. It varies in size, from some with 1200 yards per lb. to others with 1800 yards per lb. The price on this tweed is a very reasonable one, in that all wools will probably take a 30% increase in price at least during the next year. One of the manufacturers just told us that the raw materials that he uses in his handwoven rugs has increased 250% during the past 12 months, and there is now actually a wool shortage in the world, and that they are even selling their wool crops in New Zealand three years in advance of their actually having it. Oh yes, the price. It is \$4.80 per lb. for all of the single ply wool tweeds.

And in the same type of thread, but much heavier, we have six new English tweeds just in with 800 yards per lb. One of these was used as the weft, along with the natural finer weight.

COST OF THE FABRIC

We had a 12 yard warp, 40" wide, and it took 2 lbs. 15 oz. of the white, and 2 lbs. 12 oz. of the green for the warp. Thus, the total warp cost was \$27.00 for 12 yards, or the cost per yard was \$2.25.

We received 10 yards and 3" of finished fabric from this sample, and in the weft, we used 2 lbs. 5 oz. of the heavy dark heather grey with red and natural flecks, and 1 lb. 12 oz. of the natural. Thus the total weft cost is \$19.50, so the weft cost per yard was \$1.95 per yard.

WARP COST PER YARD	\$2.25
WEFT COST PER YARD	\$1.95
FABRIC COST PER YARD	\$4.20

Book Review Continued from Page 3

She then continues on from this, and gives good diagrams, and introduces the beginners to the Inkle loom, and tells how to make and then weave upon this loom. After that, she continues on and gives some directions for
Page 6

warping and weaving upon a two harness loom.

Continuing on, Molly Duncan tells how one can make a frame loom to weave rugs, wall hangings, and the like.

If you haven't seen this little book, I'm sure that you will enjoy it.

TITLE: SPIN, DYE & WEAVE YOUR OWN WOOL.

AUTHOR: Molly Duncan

PUBLISHER: Sterling Publishing Co., Inc.

COST: \$3.95 plus 14¢ postage.

AVAILABLE: From your favorite bookstore, or from Robin & Russ Handweavers if desired.

LET'S HIT THE CONVENTION TRAIL

The weavers in the midwest, the northwest, and the far west all have upcoming conventions that they can participate in April, May and June of this year.

The 20th Annual Midwest Weavers Conference will be in Denver at Temple Buell College, Wednesday through Saturday, May 30th through June 2nd, 1973. Two exciting speakers are scheduled, plus many other activities.

The Pacific Northwest 6th Biennial Handweavers Conference will be in Vancouver, British Columbia at the University of British Columbia during the dates of May 24th to May 27th, 1973. Three speakers are scheduled, and it will be a three day affair, opening on Friday and closing on Sunday.

It is also hoped that some other guilds in the Pacific Northwest will be considering the possibility of hosting the Pacific 7th Northwest Conference in 1975, and will be prepared to submit a bid at the conference in May of this year.

And the Conference of the Northern California Handweavers (held annually) will be at the Richmond Art Center in Richmond, California on the dates of April 28 and 29, 1973. This is an exciting place to hold a conference, as one was held here before, in this same convention or art center.

These conventions are always very stimulating and exciting, and it is hoped that you can participate in one of these.

And then in 1974, Convergence 74 will be held in San Francisco, and one of the featured speakers there will be Peter Collingwood, so why not make plans, even a year in advance.

CLASSIFIED ADVERTISING

Why not advertise your old loom, duplicate equipment, and other such items in this section. Price per 5-line ad is \$5.00. Payment to accompany your advertising copy.

SPECIAL SALE OF 12 FOLD LINEN IN NATURAL AND WHITE

This linen is 12 ends of a fine linen all wound together as one thread. It came to us on about 3 lb. to 4 lb. cones in the natural and white. We will close this out on the cones only at \$2.40 per lb. Remember, cones are about 3 to 4 lbs. We have been selling this at \$4.80 per lb., when we wind it off onto 1/2 lb. spools, but by the cone only

only, in natural and white, \$2.40 a lb. ROBIN & RUSS HANDWEAVERS, 533 North Adams St., McMinnville, Oregon 97128. We have about 30 lbs. of white and 50 lbs. of natural left.

A NEW ANIMAL FIBER YARN, WHICH I BELIEVE IS MOSTLY CAMEL'S HAIR, with some Alpaca.

This yarn came to us from England, marked Animal Fiber, and I believe it is mostly a poor quality of camel's hair, mixed with an Alpaca. This is a guess on my part, but it has the color of the camel's hair, and seems very similar to some that I have seen in England. It is a 2 ply yarn, and can be used for warp or weft. And the price is reasonable at \$3.20 per lb. It has about 1260 yards per lb. We used it in an upholstery sample, and it seemed excellent for the purpose. Robin & Russ Handweavers, 533 N. Adams St., McMinnville, Oregon 97128.

10/2 THIRSTY LINEN WARP IN COLORS

Now available in 11 colors, plus white, this size 10/2 linen has 1500 yards per lb. It is a dry spun linen, spun for high absorbency, so we call it thirsty linen. The colors were sold to us as being both washfast and sunfast. It comes on about 1 lb. tubes, and is priced at \$5.60 per lb. Write for a free sample sheet if you are interested. Robin & Russ, 533 North Adams St., McMinnville, Oregon 97128.

ABOUT 10 WEIGHTS IN PLYED AND BRAIDED NATURAL LINEN HARNESS CORD FROM SWITZERLAND

This linen would be excellent for many macrame projects, as well as warp or weft in weaving. It is mostly jacquard loom linen, which is braided and some of it is waxed. Normally wholesales for about \$10.00 to \$12.00 per lb. I purchased about 500 lbs. of odd lots of from 3 to 10 lbs. of a size in Switzerland. It is on 1 lb. cones, and is just \$4.00 per lb.. Some of it is 6, 8, 10, 12 and 14 cord linen, which means this many number of ends braided together as one thread. As it takes 9 to 15 lbs. for most jacquard looms, there was not enough of one lot for a loom, so this is why we were able to buy it at a reasonable price. Remember, just \$4.00 per lb., and most is on about 1 lb. cones. Excellent for treadle ties, for harness cord, and the like. ROBIN & RUSS HANDWEAVERS, 533 North Adams St., McMinnville, Oregon 97128.

2½ LEA SLUB LINEN IN 11 COLORS, PLUS NATURAL AND BLEACHED WHITE

This linen was spun to order for Robin & Russ Handweavers in Scotland, and when we requested washfast and sunfast colors, we found it cost more to dye the yarn than it did to manufacture it originally. Write for a free sample sheet of this yarn. It comes on approximately 1 lb. tubes, and it is \$5.60 per lb. It has approximately 750 yards per lb. Can probably be used for warp if handled with care, but it is a slubby, textured yarn, and is best used as weft. ROBIN & RUSS HANDWEAVERS, 533 North Adams St., McMinnville, Ore. 97128.

HEAVY GERMAN RUG WOOL YARNS, WRAPPED AROUND A JUTE CORE

for durability and long wearing properties. We have two weights of this yarn. The heaviest has about 50 yards per pound, and it is natural with a touch or blending of such colors as yellow, or natural and brown, or natural and grey, etc. Very heavy, and hard to sample these yarns, but we will send you a sample of one of these if you wish to see it. This is \$6.00 per lb. while our current stock lasts, but we have been notified that when our next order goes in to Germany, that it will cost us 50% more than this lot did. Takes from 5 to 8 lbs. for a rug about 36" x 60," depending upon just how you weave it. And we have 5 colors in a finer weight, and one of these is an all natural brown blending, with natural brown wools used. This has about 80 to 90 yards per lb. for the finer weight, and is \$7.00 per lb. ROBIN & RUSS HANDWEAVERS, 533 N. Adams St., McMinnville, Ore. 97128.

SPINNING AND WEAVING IN PALESTINE,

By Shelagh Weir. This interesting little paperback published by the British Museum has some very interesting content, and will be a delight to most spinners and weavers. Price is \$2.50 plus 14¢ postage. Limited number available. ROBIN & RUSS HANDWEAVERS, 533 N. Adams St., McMinnville, Oregon 97128.

EXOTICA PLUS IN BURSHED MOHAIR FROM IRELAND

We have 6 new colors in the beautiful brushed mohair from Ireland. It has 1,000 yards per lb., and is \$9.60 per lb. Comes on about 1½ to 2 lb. cones, but we can wind off less if you wish. Write for a free sample sheet of the new colors. Robin & Russ, 533 N. Adams St., McMinnville, Ore. 97128.

INDIAN BASKETS

by G. W. James. This is an excellent reprint of another early 1900 work, and is an outstanding book on basketry. It is actually a combination of two books on the same subject, and well worth reading. Price is \$12.50 plus pp. and ins. Robin & Russ, 533 North Adams St., McMinnville, Ore. 97128.

The Weaver's Marketplace

HANDWEAVING YARNS and SUPPLIES

A wide variety of distinctive yarns, developed especially for handweaving is available for prompt shipment in quantities to suit your needs.

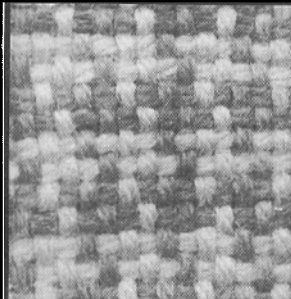
Write today for *FREE CATALOG and PRICE LIST*

The Handweaver's Headquarters
Lily Mills Company
Dept. HWWW Shelby, N. C.

Compact
Folding
**NORWOOD
LOOMS**

Five Widths
16" — 22" — 30" — 40" — 50"
Made of Cherry

The Norwood Loom Co.
P. O. Box 272
Baldwin, Michigan



TRY YOUR YARNS Minute Loom

Every weaver needs one. America's best sample loom. Design beautiful fabrics. Know before you warp. Strong, durable.

Color and Design Course

Equals 6-week course.

Develop individualized fabrics. Step-by-step instructions. Illustrated. Basic information to all weaving.

Both for **\$3.95** Ppd.

PAYTON LOOM SHOP
19630 A. W. Shaw Street
Aloha, Oregon 97005

warp and weft
533 NORTH ADAMS STREET
McMINNVILLE, OREGON 97128

