

# warp and weft

Volume XXXV, No. 5

May 1982

## warp and weft

Published monthly (except July and August) by  
Robin & Russ Handweavers, 533 North Adams Street,  
McMinnville, Oregon 97128

Subscription: \$12.00 per year U.S.A.  
\$12.50 per year Canada  
\$13.00 per year foreign  
Back issues, \$1.25 each plus 20¢ postage

---

Volume XXXV, No. 5

May 1982

---

### A Word from the Editor:

Here it is, the May issue. Sometimes I wonder if I will ever catch up.

Just have decided that since business has been so poor these past eight months, that I will forego the trip to England this fall, as we still have quite a few yarns from the shipment that arrived in March, which have not yet really been advertised on sample sheets, but have just been put on display in the shop.

As I will not be making this trip, it will give some more time to work on the samples for the two bulletins.

The past two days I have been concentrating on designing and sampling some samples for both Warp and Weft, and also Drafts and Designs. I did come up with one quite nice sample for Warp and Weft, and two nice samples for Drafts and Designs. We will next put on the loom some samples of the new English wool tweed yarns and do some experimenting, and hopefully in a day or two I will have another sample for Warp and Weft. I've come up with a very nice idea which was developed by Mary Snyder, and it should make a most interesting coat sample out of these wool tweeds.

We start tomorrow, Labor Day, setting up the two looms for Warp and Weft, and the Drafts and Designs projects, so we will be doing some weaving on these two toward the end of the week.

One of our employees, Marcee Whaley, is so interested, she is in today and is weaving placemats for her Christmas gifts this fall. It is nice to have employees that are really interested in the craft you work in.

Have also just finished setting up a loom at home with a most interesting honeycomb weave, and you will be seeing this sample in a few months also. It is very striking.

Having to go back east a little more often to check and see how my mother is doing in Pennsylvania, I have been going and visiting some suppliers in New York, New Jersey, Rhode Island, Massachusetts, and Connecticut; and we hope to have some more most interesting yarns in soon. Will let you know more if all of these plans do mature.

And we have several new publications which I think will be of interest. We have had reprinted for us in England the book *Spinning Wheels, Spinners, and Spinning*, by Patricia Baines. It will be in a paperback edition, and is an outstanding book, and will be in soon. This one will sell for \$10.95, whereas the hardbound used to be about \$17.00. We are delighted with this one.

And we have co-published with a firm in England the book *Iban or Sea Dayak Fabrics and Their Patterns*. It is a most interesting one. It is \$14.95 per copy and is a most interesting study of the weaving of the Sea Dayaks.

And then, we arranged with Batsford in England to distribute the book *Rug Weaving*, by Brian Knight, and it seems to be an excellent book, with very clear and concise directions. It is a hardbound book and is \$22.50. And last, but not least, we are now in the process of republishing a book which has been out of print for a long time. It is the *Warp Weighted Loom*, by Marta Hoffman. This was originally printed in Norway in English and reprinted there again in English; and now, we are having it reprinted here in the U.S.A. for the third

edition. This is the only book I have ever seen that gives very good details of the warp-weighted looms used by the Icelandic people and also the Scandinavians, some thousands of years ago. It, too, will be \$16.95 per copy and is, as I mentioned, about the only study of its kind that I have seen on this subject.

Well, as you can see, even though the loom and yarn business has slowed down, we have been working on other projects, and now they are about all complete, and the business is still slowed down. Our next effort, I guess, will be to get caught up on the two bulletins.

*Russell E. Groff, Editor*

### **This Month's Cover Photograph**

A transparency for a room divider makes a most interesting project. I believe that this person made their own frame, warped, and wove the transparency on this frame. I was particularly intrigued with the use of driftwood, and different wheat straws, and seed pods. This was displayed at a conference about 15 years ago, but I think it would look very nice in the modern home of today.

I would suggest a good linen warp, say like a 20/2, line quality linen, and as the main weft thread, the same size of thread, along with whatever you want to inlay on the fabric.

Also, in looking closer, I notice that some warp is set closer than other portions; and if I didn't know better, I would also say that this weaver had two different lots of warp thread. It does give ideas, though, as to how to use different lots of thread, and how to make a relatively inexpensive wall hanging.

### **This Month's Book Review:**

Paula Simmons is both a prolific spinner, weaver, author, and homemaker. Her latest book is entitled *Spinning for Softness and Speed*, and it is this new book that we want to tell you about.

She mentions that one of the greatest pleasures of handspun wool is its softness, but that many have difficulty with producing this kind of yarn.

This useful book does several things. It shows spinners how to spin without looking at the yarn, and it helps to control the texture of the yarn. She suggests that you try spinning one handed, and points out what the one-handed method will do for the handspinner. She states it will help increase speed, reduce over-twist, make for more evenly spun yarn, and require less effort. From here, she proceeds to try to teach you how to spin this method with the use of words and pictures. Then, she goes on and teaches you how to prepare the wool, what are the limitations of your spinning wheel, what is best for speed and softness, and what the major differences are between different types of spinning wheels. Then she tells you what an outstanding spinner should be able to do, and how she does it.

Next comes a section for different projects of soft yarns and how to achieve these goals.

She then explores some of the new and different equipment that has been produced for the handspinner and explains how it works. All in all, a most interesting book. The price is \$7.95, and it was published by Madrona Publishers.

TITLE: *Spinning for Softness and Speed*

AUTHOR: Paula Simmons

COST: \$7.95, plus shipping and handling

PUBLISHER: Madrona Publishers, Inc.

AVAILABLE: Direct from the publishers or from Robin & Russ Handweavers, if desired.

I might also mention that when she isn't writing, lecturing, or giving workshops on spinning, she raises and has a herd of black sheep. She spins most of the yarn from this herd. She is the author of *Raising Sheep the Modern Way*, *Spinning and Weaving with Wool*, *The Handspinner's Guide to Selling*,

*(continued on page 6)*

## CLOUDED SKIES:

This interesting 4-harness weave was suggested by a sample that we saw in the Pinellas Weavers Guild bulletin from Florida.

### TIE-UP DRAFT:

4			O	O
3	O	O		
2		O		O
1	O		O	
	1	2	3	4

O—tie-up for Jack-type looms, or counter-balanced.

### THREADING DRAFT:

4	O	O					O	O	
3				O	O			O	O
2			X		X		X		X
1		X		X		X		X	

### KEY TO COLORS IN THE WARP:

O — Baby blue, 6-strand cotton floss  
X — 10/3 White, unmercerized cotton

### WARP:

There are two threads used in the warp, as follows:

X—10/3 white, unmercerized cotton  
O—6-strand cotton, baby blue

### WEFT:

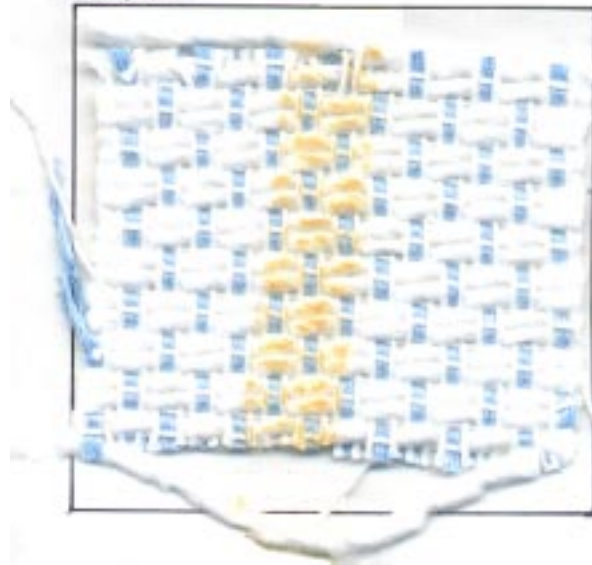
There are two threads used in the weft. One of them is the 10/3 white, bleached, unmercerized cotton, the same thread that was used in the warp.

The second thread is a new, heavier, slightly slubby, bleached cotton which was sold to us as “dref spun” cotton. And don’t ask me what “dref spun” means, as I’ve looked in very nearly every textile dictionary and cannot find this term anywhere.

### REED USED:

A 10-dent reed was used, and it was double-sleyed, two ends per dent, or 20 ends per inch.

Sample



### OUR TREADLING SEQUENCE:

There are just eight shots in each pattern repeat, so it is quite easy to weave. Here is the sequence:

1. Treadle #1, 10/3 white cotton
2. Treadle #3, heavy white, dref spun
3. Treadle #1, 10/3 white cotton
4. Treadle #3, heavy white, dref spun
5. Treadle #1, 10/3 white cotton
6. Treadle #4, heavy white, dref spun
7. Treadle #1, 10/3 white cotton
8. Treadle #4, heavy white, dref spun

End of one complete pattern repeat. Do repeat over and over as desired.

### **MORE ABOUT THE FABRIC:**

Very, very easy to weave, and there is only one thing to keep in mind. You need a firm, even beat, as the heavy bleached cotton does not pack in as tightly as one would think.

We thought of many uses for this fabric, and one was for a patio placemat, and perhaps even for tablecloths, for both inside and outside.

We did try several different threads in the weft in different colors, and always seemed to come back to this simplest of patterns.

Use this for something like a lightshade cover or a waste basket or book cover, and it should be very effective for some of these uses.

We did several samples, and in one of them, it looked as though it was a waffle pique. In another, it looked like a completely different fabric when a darker blue 6-strand floss was used with the white cotton. I believe that I will give one or two alternate treadlings that would be excellent for patio mats.

On the wide 40" piece, you cannot beat the weft as nearly as tight as you can on a 14" width for placemats, bag material, or runners, etc. So, your placemats will be even firmer and tighter than our sample here.

Really, no problems with this except what is indicated above. Hope you will enjoy weaving it.

### **MORE ABOUT THE THREADS USED:**

In our warp, we used the 6-strand cotton floss. It has about 2080 yards per pound, and we have about 25 colors which we wound onto ½-lb. tubes, and we have about 12 more colors which are on skeins of about 8 oz. or less. There is a good price on this, as we retail it for \$8.00 per pound, and the regular price is anywhere from \$19.00 to \$24.00 per pound at most suppliers.

The second thread used in the warp was a 10/3 bleached white cotton which is

unmercerized, and which we purchased from an embroidery mill. This is a top quality unmercerized cotton, one of the best I have ever seen. It has 2800 yards per pound, and it came to us on tubes from the embroidery mill, and each tube does weigh about 6 ounces. This is the way it came directly from the embroidery machines in the mill. It is priced at \$5.60 per pound, and we have about 300 pounds of the 10/3 white on hand.

Also, we have about 25 pounds left of this same 10/3 cotton in natural, unmercerized cotton, It, too, is the top quality yarn and it, too, sells at \$5.60 per pound. I'm sorry we cannot get any more of this natural; it is such a good, top-quality yarn.

The bleached white "dref spun" cotton came on about 3- to 4-lb. tubes. It has about 500 to 550 yards per lb., and we call it "Snowdrift." It is a .65, and so this means that it is or has 65/100s of 840 yards per pound. So, the yardage per pound should be 544 yards per pound; but it is usually slightly less than it is listed. We can wind off ½-lb. tubes for you. It is priced at \$4.80 per pound.

### **COST OF THE WARP AND WEFT:**

It took 4800 yards of each of the two warp threads. The 10/3 natural unmercerized cotton has 2800 yards per pound, so you can see that it and the white both are good, low-cost warp threads.

The 6-strand cotton floss has 2080 yards per pound. It took 2¼ pounds of this for the warp, and it took 1¾ pounds of the 10/3 cotton with 2800 yards per pound. We had a 14-yard warp, 40" wide, so our total warp cost for the two threads was about \$27.65, and this is very close to having our warp thread cost about \$2.00 per yard.

We received about 12½ yards of finished fabric from our 14-yard warp. In the weft, we used about 1 lb. 4 oz. of the 10/3 bleached white, unmercerized cotton. And we used about 6 lbs. 12 oz. of the dref spun cotton, at \$4.80 per pound. so our

total weft cost was about \$39.35, and this brings it to about \$3.10 per yard on the weft.

WARP COST PER YARD ..... \$2.00  
 WEFT COST PER YARD ..... 3.10  
 FABRIC COST PER YARD ..... \$5.10

**Book Review**

(continued from page 3)

and last but not least, she is the author of a book entitled *The Zucchini Cookbook*, and another one entitled *The Green Tomato Cookbook*. All of these titles are also available from Robin & Russ Handweavers.

**This Month's Second Project**

This month's district check is to be woven in a broken twill, called a "Dornic," and it is to be woven with wool tweed yarns, with not as many colored flecks as per some tweed. This is excellent for coating or suiting. Note there are four blocks in the pattern, two of the same color, and each other block a different color.

**THREADING DRAFT:**

4	C	C	B	A	A	B
3	C	C	B	A	A	B
2	C	B	B	A		B
1	C	B	B	A	B	B

Note there are 6 threads in each unit, and each unit is a different way of writing a "Dornic" twill.

**KEY TO WARP THREADS:**

- A. Natural, single-ply wool tweed
- B. Tan, single-ply wool tweed
- C. Very light brown, single-ply wool tweed.

**WARP:**

This wool tweed should have about 1300 to 1500 yards per pound. You use an 8-dent reed and double sley, 2 ends per dent, or 16 dents per inch.

**WEFT:**

You can use the same three colors of

wool tweed as in the warp, or you can use three shades or values of wool tweed, slightly darker in color than your warp, and it should also give some interesting effects.

**TIE-UP:**

4			○	○
3		○	○	
2	○	○		
1	○			○
	1	2	3	4

**TREADLING:**

Six shots in each block, two different blocks, with three colors used in these two blocks.

- Treadle 1,2,3,4,1,2, in tan tweed
- 3, 4, 1, 2, 3, 4, in natural tweed
- 1, 2, 3, 4, 1, 2, in lt. brown tweed
- 3, 4, 1, 2, 3, 4, in tan tweed
- 1, 2, 3, 4, 1, 2, in natural tweed
- 3, 4, 1, 2, 3, 4, in lt. brown tweed

Repeat over and over as desired.

There are many uses for this fabric. It can be used for tailored suits, skirts, and for men's sport coats. It would be an ideal idea for a man's scarf, about 12" wide and about 72" long, plus the fringe.

When finished weaving, I would wash this fabric in luke-warm water, allow to drip dry, and then steam press.

And while the wool tweed is normally not a warp thread, most of it has a strong enough twist that it will work well for either warp or weft. We are just now working on a wool tweed fabric of this type, with a different pattern, for a future warp and weft fabric.

Normally, the wool tweeds of this type are spun in oil, so this is the reason why you want to wash the fabric before using. You should also use a mild soap like Ivory. It could even be washed in Woolite.

This is a district check from Scotland called 'Haystoun.' They are often woven in other yarns such as Cheviot wool, or many of the different single-ply wools that are spun in Scotland.

---

**CLASSIFIED ADVERTISING**

Why not advertise your old loom, duplicate equipment, and other such items in this section. Price per 5-line ad is \$6.00. Payment to accompany your advertising copy.

---

**20/4 NATURAL IRISH LINEN (same size as 10/2)**

1450 yards per pound, on 1/2-lb. tubes. Special price while current stock lasts at \$8.80 per lb. This is not the raw grey linen, but is the softer, boiled color. Robin & Russ, 533 North Adams Street, McMinnville, Oregon 97128.

---

**5 EXTREMELY HEAVY SINGLE PLY WOOL BERBER YARNS. 6 SINGLE PLY FINER BERBER.**

All single ply yarns on about 1-lb. cones, and it is just \$6.80 per lb. Free samples upon request. Robin & Russ, 533 No. Adams St., McMinnville, OR 97128.

---

**5 Ply, NATURAL, SMOOTH COTTON AND RAYON**

A little rayon has been blended in with this cotton to give more sheen, and it is an excellent warp thread. On about 10- to 11-oz. cones, and about the size of a perle 3 cotton, it is \$6.00 per lb. From England. Robin & Russ, 533 North Adams St., McMinnville, Oregon 97128.

---

**LOOMS—46", 4- AND 8-HARNESS JACK-TYPE**

Are you familiar with our Oregon Trail loom? We are very proud of our own beautifully crafted jack-type loom. Here are some of its features:

1. Rigid X-frame structure.
2. Lots of weaving room between the castle and the breast beam.
3. Sturdy beater, beveled shuttle race.
4. Lock rods to hold beater while slewing.
5. Large eye, flat steel heddles.
6. Lift out, removeable harnesses.
7. Spring lock hooks.
8. Removeable pattern board.
9. One-yard sectional warp beam, with 2" sections.
10. Very light lifting action.
11. Immediate delivery.
12. When released, warp does not spring forward.
13. High quality ratchett & pawl system.
14. Can be easily taken apart for storage, or for moving from room to room.
15. One-year guarantee on all parts.

For a free brochure, write to Robin & Russ Handweavers, 533 No. Adams St., McMinnville, Oregon 97128.

---

**DRAFTS AND DESIGNS:**

This is our monthly bulletin for the multiple harness weaver and features patterns mainly of 5 to 8 harnesses. We also do one or two samples a year, which feature 9-, 10-, 11-, or 12 harness patterns. A large, generous sample swatch is included with each issue, accompanied by complete directions for weaving, including suggested uses, finishes, costs, and variations. Subscription is \$10.00 per year in the U.S.A., \$11.00 per year in Canada, and \$12.00 per year for foreign subscriptions. All subscriptions start with the September issue. ROBIN & RUSS HANDWEAVERS, 533 N. Adams St., McMinnville, Oregon 97128.

---

---

**2/60's SPUN TUSSAH SILK, 2-PLY:**

This is a fine-weight silk, but has the natural tan tussah silk color. It is in skeins, and I believe they are about 1/2 lb. each. Price is a most reasonable one for this high quality spun silk, at \$24.00 per lb. Also, we have had some of this 3-ply, but it will be about two to three months before it comes in from England, and it is on about 1-lb. cones, and the plying and winding onto cones cost us 4 English pounds per lb. So, the 3-ply 2/60's when it comes in will be more. Robin & Russ, 533 No. Adams St., McMinnville, Oregon 97128.

---

**2/53's SPUN SILK, NATURAL, WITH A SHEEN:**

This one has about 11,500 to 12,000 yards per lb., and should work well for warp at about 40 or 45 ends per inch. It is on about 1 lb. 4 oz. cones, and the price of this excellent warp is \$24.00 per lb. Robin & Russ Handweavers, 533 No. Adams St., McMinnville, OR 97128.

---

**HEAVY GERMAN RUG WOOL WITH A JUTE CORE:**

About 8 to 10 colors still on hand, it has about 18 yards per lb. Price is still the same, at \$12.00 per lb., and it came on 5- to 6-lb. balls, but we can wind off 1/2-lb. skeins. Robin & Russ Handweavers, 533 No. Adams St., McMinnville, Oregon 97128.

---

**FINE GERMAN RUG WOOL WITH A CORE:**

We have natural, natural with pale yellow injects, or natural with dark brown injects. It has 80 yards per lb., and is excellent in wall hangings, circle weavings. Available on 7- to 8-lb. balls, it is \$14.00 per lb., and yes, we can wind off 1/2-lb. skeins. This weight is \$14.00 per lb. Robin & Russ Handweavers, 533 No. Adams St., McMinnville, Oregon 97128.

---

**4 BEAUTIFUL TEXTURED WOOL NUB YARNS:**

These are 76% wool, with 24% cotton binder. One is brown, black, and natural; one is black and natural; another is a most beautiful black and brown; and the last of these 4 wool boucles is a scarlet red/fuchsia blend with a black binder. It should be much more in cost, but we have a reasonable amount of it also. It comes on about 1-lb. cones, and the cost is \$9.60 per lb. For free samples, send a self-addressed, stamped envelope, and we will see that you get samples of these 4, plus another sample sheet or two. Robin & Russ Handweavers, 533 No. Adams St., McMinnville, OR 97128.

---

**30/2 BLEACHED WHITE MERCERIZED DURENE COTTON**

some like to weave with a fine thread, so I took a chance and purchased a 200-lb. lot of this 30/2 bleached white, mercerized durene cotton. It is a very nice quality, has 12,600 yards per lb., and came on 2- to 3-lb. cones. Price is most pleasing for this fine cotton at \$6.00 per lb., by the cone. It takes so long to wind it off, that if you want less than a 2- to 3-lb. cone, then it is \$8.00 per lb. Robin & Russ Handweavers, 533 No. Adams St., McMinnville, OR 97128.

---



# The Weaver's Marketplace

## Wool Tweed Yarns

34 colors in stock for immediate delivery. It has from 1300 to 1800 yards per pound, depending upon the color. Also, 17 more colors have just arrived to be unpacked from England. Send a self-addressed stamped envelope for free samples of all 34 colors.

**Robin & Russ Handweavers**  
533 No. Adams St., McMinnville, OR 97128

## Heavy & Exciting Natural Brushed Wool from England

84% wool, 16% nylon binder  
360 yards per pound  
**SPECIAL OFFERING — \$16.00 lb.**

For free sample, send a self-addressed stamped envelope to:

Robin & Russ Handweavers  
533 No. Adams St. McMinnville, OR 97128

Compact  
Folding  
**NORWOOD  
LOOMS**

Five Widths  
16" — 22" — 30" — 40" — 50"  
Made of Cherry

**The Norwood Loom Co.**  
P. O. Box 167  
Fremont, Michigan 49412

## TWILLS AND TWILL DERIVATIVES

Design your own fancy, braided, interlocking, corkscrew, decorated, waving — also crepes, waffles, shadow weave. 120 pages, soft cover, 150 B & W photos Lucille Landis, 22 Northway, Old Greenwich, Conn. 06870 **\$10.50, plus \$1.25 postage & handling.**

**w a r p a n d w e f t**  
533 NORTH ADAMS STREET  
MCMINNVILLE, OREGON 97128

