



warp and weft

Volume VIII, No. 9

November, 1955

warp and weft

Published monthly (except July and August) by Robin & Russ Handweavers, 632 Santa Barbara St., Santa Barbara, California.

Subscription: \$2.50 per year.

Back Issues: 25c each, plus postage.

Editor: Russell E. Groff, 632 Santa Barbara St., Santa Barbara, Calif.

Assistant Editors: Robin Groff, Frederick Brown, Marie Berggreen.

Volume 8, No. 9 November, 1955

A Word from the Editor

We don't like to make excuses, but we have had to put off our 12 page edition until just a little later. We are planning on a little more advertising to help pay the increased cost of the additional four pages. We were kind of surprised, as an additional four pages would cost us to have printed about two-thirds of the current cost of the magazine.

We might at this point tell just a little more about our procedure with *Warp and Weft*. We take it to the printer by the 3rd of the month, and have it back from the printer by the 11th. Thus, with four days to address and put in the samples, we are trying to always mail *Warp and Weft* by the 15th of the month. These past two months we have done this, and hope to continue this procedure.

We are gradually receiving notices from the various weaving guilds, and someday, we hope to have that directory available, and if we do, we plan on its going out to *Warp and Weft* subscribers.

We are going to mention another project now under progress. We are compiling and will publish sometime soon, an instructional manual on Sectional Warping. We are working with a loom manufacturer, and will try and show in step by step pictures and descriptions, two different

methods of sectional warping. The magazine, or book, will have from 60 to 75 photographs, and will have various other pieces of information of interest to those doing sectional warping. We now have most of the text ready, and the job is now to get it ready for the printer.

Book Review

Our book review this month is of a book pertaining to one specialized field, that of rug-weaving. It is *TRANSMATTOR*, och Andra Mattor, by Marta Broden and Gertrud Ingers.

This is series number 3 of a new Swedish Book Series, and it is well done, as are the other two of the series.

Dealing primarily with rag rugs, this book has the customary excellent color photographs, and black and white photographs that we begin to expect in the Swedish texts.

The drafts and weaving instructions are clear, and easy to understand, and while most of the rugs are rag rugs, there are a few of the Flossa and Tapestry rugs shown.

This book is one that would help you in designing that particular rug you plan on weaving. It has about 90 photographs and about one-third of them are in color. The colors help to give you ideas, and even the black and white photographs give some unusual line and stripe effects.

One thing that we learned on our trip to Scandinavia in 1940 was that the Danish and Swedish Rag Rugs are made from entirely new materials, and are not from old rugs, pants, shirts, coats, drapes, etc., as we know them here in America.

If your interest lies in this type of rug, I'm sure that this book would be of interest.

We will list the complete series below, that you might become acquainted with all three of them.

Weavers from Here and There

It is our intention, each month, to give a short article about various well known weavers from all over the country. If you know of someone exceptional living in your area, let us know about them, that we might possibly present them in this column.



EVELYN NEHER
of New Canaan, Connecticut

The weavers of New Canaan, New Haven, Connecticut, and of Newbury, Vermont, are lucky to have Evelyn Neher for a teacher and weaving instructor.

Mrs. Neher started her weaving by helping her mother set-up looms and weave, and thus an interest in weaving was developed that has been continued through the years by Mrs. Neher.

In Mrs. Neher's own words, she learned and studied from every weaver that she met and became acquainted with. Also, she commuted to New York for weaving instruction, and also studied teacher training in both Vermont and in Connecticut.

In between times, that is, taking care of her two children, and teaching school during the war years, and preserving most of their own food from Mr. Neher's garden, she has studied, taught, exhibited and demonstrated many techniques, fabrics and ideas.

She teaches many workshops in New Haven, Newbury, and that area. One of Mrs. Neher's important contributions to weaving is the book she wrote and published, titled "FOUR HARNESS HUCK." Many copies of this have been sold and enjoyed by weavers throughout the United States.

She is now engaged in work on another book, and the subject this time is "INKLE LOOM WEAVES." We are looking forward to hearing more about this book soon, and hope to be able to review it for you in *Warp and Weft* soon.

Now that one of her children is through college and the other is just entering college, Mrs. Neher is doing more teaching and weaving study.

The story of her method of teaching is an enjoyable one, and we'd like to be able to tell you more about her, but as you know, our space is limited.

However, if you'd like a copy of *FOUR HARNESS HUCK*, or if you'd like to know more about her workshops and teaching, her address is: Mrs. Evelyn Neher, 225 South Main St., New Canaan, Conn.

This Month's Cover

This month, we have a change of scenery from our fabric covers of the past several months. We thought that a picture of a young weaver might stimulate some of the more experienced weavers to greater effort.

Anyhow, this is a picture of our daughter, Janice Susan Groff, at the age of two showing some interest in weaving. Incidentally, notice the hand-woven silk dress

(Cont'd. on Page 7, Col. 2)

CANDY CURTAINS

This month's sample was designed for Kitchen Curtains. They were planned so that light would penetrate the curtains and so that no one could see in through the curtains. Almost everyone who sees them thinks it a shame they were designed for the kitchen.

Threading Draft: (to show color progression)

	1 Repeat				1 Repeat														
4	B	B	B	B	A	A	A		B	B	B	B	B	A	A	A			
3		B	B	B	B	A	A	C		B	B	B	B	B	A	A	A		
2			B	B	B	B	A	A	A	C		B	B	B	B	B	A	A	C
1				B	B	B	A	A	A		B	B	B	B	B	A	A	A	C

The threading draft is simple this month, being a standard twill, 1, 2, 3, 4 on a 4 harness loom. However, please note below, the way in which the reed is sleyed, and the weights of thread used in Warp and Weft.

Repeat your threading draft over and over. You will notice that the warp threads (various colors) will change to different harnesses, but this will not affect the fabric whatsoever. In other words, on the first repeat you have the "C" color threads on harnesses one and two, on the second repeat, they are on 2 and 3, on the 3rd repeat of the pattern they will be on 3 and 4, and on the 4th repeat of the pattern, the "C" color thread will be on harnesses 4 and 1. They will then start over again on the fifth repeat on harnesses 1 and 2.

Tie-Up Draft:

4			x	x		x
3		x	x		x	
2	x	x				x
1	x			x	x	
	1	2	3	4	A	B

Treadling:

Treadling on "Candy Curtains," was just a plain weave. There were 13 shots of the Cherokee Red Spiral Boucle and 13 shots of the Natural Gold Spiral Boucle, repeated over and over.

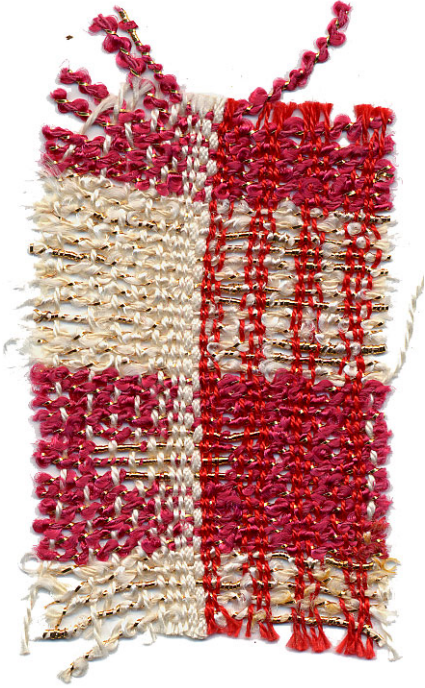
KEY TO COLORS USED IN THE WARP

- A. 10/2 bleached white durene.
- B. 20/2 red, egyptian cotton.
- C. Heavy double quick, white cotton.

Sample on next page.

Warp Used:

- A. 10/2 Bleached White Cotton, comes on approximately 1-lb. cones at \$2.50 per lb. This is Durene Cotton, best quality American Cotton. 4,200 yds lb.
- B. 20/2 Red Egyptian Cotton is used in the warp also. It has 8400 yards per lb., comes on 1/2 lb. cones and is \$4.50 per lb.
- C. Heavy Double Quick Cotton. A new thread just recently put out by Lily Mills. It comes in 125 yard skeins and is 30c per skein.



Weft Used:

Two colors of *Spiral Twist Rayon Boucle* were used. This yarn has 1300 yards per lb., and comes on cones. Natural with gold is \$3.50 per lb., Cherokee Red with gold is \$4.00 lb.

Reed Used:

The reed used to weave this fabric was a 15 dent reed.

Reed Sleying:

The manner in which the reed is sleyed is the key to the whole fabric. Please pay attention to this particular step in the loom set up.

This will be a 2" repeat listed below, and you repeat this over and over again.

- 1st dent — 4 white threads, 2 of the heavy and 2 of the 10/2
- 2nd dent—2 threads 10/2 white
- 3rd dent—2 threads 10/2 white
- 4th dent—1 thread 10/2 white
- 5th dent—skip this dent; no threads
- 6th dent—1 thread 10/2 white
- 7th dent—skip this dent; no threads
- 8th dent—1 thread 10/2 white
- 9th dent—skip this dent; no threads
- 10th dent—1 thread 10/2 white
- 11th dent—skip
- 12th dent—skip
- 13th dent—skip
- 14th dent—skip
- 15th dent—1 thread 10/2 white
- 16th dent—3 threads 20/2 red, Egyptian
- 17th dent—2 threads 20/2 red
- 18th dent—skip this dent
- 19th dent—skip this dent
- 20th dent—2 threads 20/2 red
- 21st dent—3 threads 20/2 red
- 22nd dent—skip
- 23rd dent—skip
- 24th dent—skip
- 25th dent—3 threads 20/2 red
- 26th dent—2 threads 20/2 red
- 27th dent—skip this dent
- 28th dent—skip this dent

- 29th dent—2 threads 20/2 red
- 30th dent—3 threads 20/2 red

Repeat over and over. Every repeat is 2" width.

Cost of Fabric:

Breakdown by cost of Warp, cost of Weft, and then the total cost of the fabric.

- A. WARP: 20/2, red, used 12 oz. on a 15 yard warp; 4.50 lb.

WARP: 10/2, white durenne cotton, used 13 oz. on a 15 yard warp; \$2.50 per lb.

WARP: Dguble Quick Cotton. Used 5 skeins in setting up loom for 15 yard warp; 30c a skein.

- B. Actual Cost of Warp was 47c per yard —for the combination of 3 threads.

- C. WEFT: Red: Used 2 lbs. 10 oz. in 15 yards. Cost \$4.00 lb.
White: Used 2 lbs. 10 oz. in 15 yds. Cost \$3.50 lb.
Actual cost of Weft per yard was \$1.27 per yard.

- D. This fabric cost per yard (for both Warp and Weft) was \$1.75 per yard.

BOOK REVIEW (Cont'd from page 2)

1. Title: TRANSMATTOR
Authors: Marta Broden and Gertrud Ingers
Cost: \$3.50 plus 17c pp & ins.
2. Title: Handdukar och Duktyg
Author: Gertrud Ingers
Cost: \$3.30 plus 17c pp & ins.
3. Title: Vi Vaver till Hemmet
Author: Maja Lundback
Cost: \$3.75 plus 17c pp & ins.
Available: Robin & Russ Handweavers

A Swedish-English Weaving Glossary is given free of charge with the purchase of any Swedish Weaving Text.

WHIG ROSE PLACEMAT SET-UP

This is the threading draft and set-up of the Whig Rose place mats illustrated in our June, 1955, issue.

Right Border 88 Threads				Selvedge
Repeat 3 x				
X	X	X X X X	X	X X X
	X X	X X	X	X X
X X X		X X X	X X X	X
X X X		X X X	X X X	X X
10		22 x 3 = 66		12
				5

X X	X X	X X
X X X X X X X X X		
X X	X X	

Small Rose 19 threads

Omit on last center repeat.	Center repeat continued.	
X	X X	X
	X X X X X	
X X X	X X X	X X X
X X X	X X X	X X X
Cross — 21	Small Rose 19 threads	Large Rose 31 threads

Left Border 88 Threads		
Repeat 3 x		
X	X X X X	X
X	X X	X X
X	X X X	X X X
X	X X X	X X X
22 x 3 = 66		10

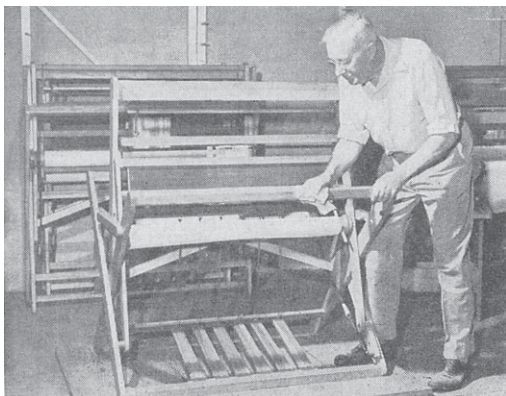
15 dent reed, sleyed double

Warp: 20/2 egyptian cotton, sett at 30 threads per inch.

Weft: Cotton floss or heavy cotton thread about the size of a perle 3.

Tabby: Both cotton 20/2 and fine 1/64 metallic wound together on 1 bobbin.

Right Selvedge	5 threads
Right Border	88 threads
Center repeat, 2 times	180 threads
Last Repeat	69 threads
Left Border	88 threads
Left Selvedge	4 threads
	434 threads



THE ALLEN LOOM

Those weavers in particular from the Pacific Northwest, and also from many other parts of the country are familiar with the Allen Loom, made in Milwaukie, Oregon, by Mr. and Mrs. Arthur A. Allen.

This loom is a result of 10 years of loom designing by Mr. Allen. It is made of Eastern Hard Rock Maple, and is sturdy, well braced, and precision workmanship is evident throughout.

On the loom you have large eyed heddles and a choice of any one of three reeds, wide treadles with an easy treadle action. There is a well designed brake release for moving the warp forward.

It is a loom which folds up very compactly. You can have either a plain warp beam, or if you wish, a sectional warp beam at a little additional cost.

The Allens also make several other accessories such as warping boards, weaving benches, an electric bobbin winder, and shuttles.

Mrs. Allen is a well known weaving instructor in the Portland area, and we hope in a future issue to tell you a little more about her activities.

If you'd like to know more about the Allen Loom, why not write to:

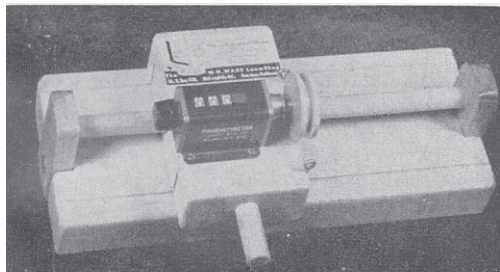
Arthur A. Allen
3322 S. E. Concord Road
Milwaukie 22, Oregon

I'm sure that Mr. or Mrs. Allen will send you a brochure or any other information that you might want about their looms and equipment.

THIS MONTH'S COVER (Cont'd.)

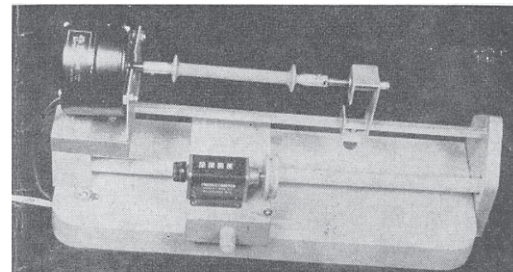
that she is wearing, and the fabric on the loom was a combination silk and cotton dress material. We might mention that Janice is now a little over three, and she has requested (and we have promised to give her) a floor loom for her fourth birthday next June. Actually, in the picture here, she was changing bobbins for us in our shuttle.

THE W. H. WADE LOOM SHOP PRESENTS



A. An easy-to-use warp measuring unit

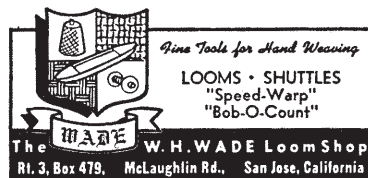
1. Measures up to 1,000 yards
2. Moveable carriage to put the yarn evenly on the spools being wound.
3. An accurate counter or measurer
4. A reset counter, that can be set back to zero after winding each spool.
5. Reasonably priced; \$16.50 each, postage extra.



B. The "Bob O Count", a complete unit

1. A spool winder
2. A bobbin winder
3. A warp measurer
4. A moveable carriage so that you can wind the yarn on spools evenly like a sewing machine bobbin.
5. A good hardwood base for the complete unit.
6. A reset counter on measurer unit.
7. Reasonably priced; \$29.50, postage extra.

ROBIN & RUSS HANDWEAVERS
are distributors for Wade Looms
and equipment



THE Weaver's Marketplace

WEAVING FOR CHRISTMAS? Gay Woven Lurex Braids

Brilliant Colors	Porcelain Colors
$\frac{1}{4}$ inch, 8c yard	$\frac{1}{8}$ inch, 5c yard

Send self-addressed, stamped envelope
for your
FREE SAMPLES

THE YARN DEPOT, INC.
545 Sutter St., San Francisco 2, Calif.

OLD HAMPSHIRE YARNS

Why not make that Christmas Stole
of Old Hampshire Weaving Worsted?
Available in size 2/17's, 4700 yards lb.
in either 2 or 4 oz. skeins.

It takes about 8 to 10 oz. of this 2/17's
to make a stole—sett at 15 to the inch,
and use it for warp and weft. And this
yarn is available in 36 unique colors.

Send 10c for sample folder to:
THOMAS HODGSON & SONS, INC.
Dept. Y
Concord, New Hampshire

A CHRISTMAS GIFT SPECIAL

Why not give an assorted box of 12
different spools of metallic 1/64" to your
weaving friend, or use it yourself? 1,000
foot spools available in these colors:

Gold	Royal Blue	White
Copper	Arctic Green	Gun-metal
Bronze	Red	Light Blue
Black	Emerald Green	Pink

Special: \$5.00 per box of 12 spools
Or: 50c per spool individually

ROBIN & RUSS HANDWEAVERS
632 Santa Barbara Street
Santa Barbara, California

SPUN DOUPIONI SILK

Size 9/2, 7500 yards per lb.
Coned on $1\frac{1}{2}$ lb. cones in natural
Use for Warp or for Weft
Price \$4.00 per lb.

Samples on request

Warp silk, 2-ply, also available in
navy, walnut brown, and lavender blue

ROBIN & RUSS HANDWEAVERS
632 Santa Barbara Street
Santa Barbara, California

warp and weft
632 Santa Barbara St.
Santa Barbara, Calif.
Return Postage Guaranteed

BULK RATE
U. S. POSTAGE
1 1/2 c. Paid
Santa Barbara, Calif.
Permit No. 440